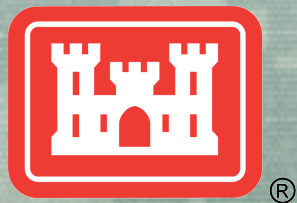


Navigation Data Resources

**Inland Navigation Economic Webinar
6 March 2013
Huntington WV**

**Dick Ash
USACE Planning Center
of Expertise for Inland
Navigation (PCXIN)**



**US Army Corps of Engineers
BUILDING STRONG®**



Navigation Data Systems

- **Existing Data Collection Systems**
 - Waterborne Commerce Statistics (WCS)
 - Lock Performance Monitoring System (LPMS)
- **New Data Initiatives**



BUILDING STRONG®

WCS Record Example

VESSEL O R I G I N D E S T I N A T I O N COMM TONS

AEF123 BS6 BS Term 3/1 KA34 Amos 3/4 Coal 1523

AEF123 KA34 Amos 3/5 OH316 ACBL Dk 3/9 Empty 0



WCS Record Example

VESSEL O R I G I N D E S T I N A T I O N COMM TONS

13579 42006101 42339202 32100

AEF123 BS6 BS Term 3/1 KA39 Amos 3/4 Coal 1523

13579 42339202 42665202

AEF123 KA39 Amos 3/5 OH316 ACBL Dk 3/9 Empty 0





Tasks

- Import Dataset
- Receive Dataset
- Transmit Datasets

Other Tasks

Filter

Submit

Operator

[SHOWING ALL]

User

(All Huntington)

Dataset Status

Active

Year Type

Fiscal

Calendar

Date Range

Start Year

2012

End Year

2012

Datasets

My Active Datasets

Dataset <input checked="" type="checkbox"/>	Errors	Transmitted	Lines
AEP RIVER OPERATIONS DEC 2012	485	0	6,826
AEP RIVER OPERATIONS NOV 2012	591	0	7,224
AEP RIVER OPERATIONS OCT 2012	503	0	7,673
ALLEGHENY ENERGY INC. NOV 2012	0	0	2
ALLEGHENY ENERGY INC. OCT 2012	0	0	2
AMERICAN COMMERCIAL LINES, LLC DEC 2012	110	0	4,534
AMERICAN COMMERCIAL LINES, LLC NOV 2012	87	0	4,849
AMERICAN COMMERCIAL LINES, LLC OCT 2012	0	0	4,992
AMERICAN COMMERCIAL LINES, LLC SEP 2012	0	4,567	4,590
AMERICAN COMMERCIAL LINES, LLC AUG 2012	0	4,393	4,419
AMERICAN COMMERCIAL LINES, LLC JUL 2012	1	4,743	4,768
AMERICAN COMMERCIAL LINES, LLC JUN 2012	0	4,588	4,594
AMERICAN COMMERCIAL LINES, LLC MAY 2012	0	5,005	5,010
AMERICAN COMMERCIAL LINES, LLC APR 2012	0	4,832	4,837
AMERICAN COMMERCIAL LINES, LLC MAR 2012	8	5,198	5,212
BEAVER ISLAND BOAT CO. DEC 2012	0	0	5
C & C MARINE MAINTENANCE COMPANY OCT 2012	38	0	118
C&B MARINE SEP 2012	1	316	318
C&B MARINE MAR 2012	1	275	278
C&B MARINE FEB 2012	2	158	161
CALUMET RIVER FLEETING, INC. NOV 2012	2	89	91
CAMPBELL TRANSPORTATION CO. SEP 2012	29	1,073	1,094
CAMPBELL TRANSPORTATION CO. AUG 2012	18	1,001	1,014
CONSOLIDATION COAL CO. (RIVER DIVISION) DEC 2012	37	0	2,313
CONSOLIDATION COAL CO. (RIVER DIVISION) NOV 2012	89	0	2,415
CONSOLIDATION COAL CO. (RIVER DIVISION) OCT 2012	99	0	2,556
CONSOLIDATION COAL CO. (RIVER DIVISION) SEP 2012	44	2,485	2,509
CROUNSE CORPORATION DEC 2012	0	0	3,453
CROUNSE CORPORATION NOV 2012	1	3,437	3,438
GATEWAY CLIPPER FLEET, INC. NOV 2012	0	0	24
GATEWAY CLIPPER FLEET, INC. OCT 2012	0	0	24
GREAT LAKES FLEET, INC./KEY LAKES, INC. NOV 2012	1	0	40
HANSON AGGREGATES BMC, INC. DEC 2012	0	0	12
HANSON AGGREGATES BMC, INC. NOV 2012	0	0	12
ILLINOIS MARINE TOWING, INC. DEC 2012	30	0	208
ILLINOIS MARINE TOWING, INC. NOV 2012	52	0	214
ILLINOIS MARINE TOWING, INC. OCT 2012	147	0	240
INGRAM BARGE CO. DEC 2012	348	0	11,146





Tasks

- Add Line
- Add Trip Line
- Delete Selected Lines
- Hold/Release Lines
- Code/Error Check
- Operator Information
- Statistics
- Send Correspondence
- Transmit Dataset
- Untransmit Dataset
- Untransmit Selected Lines
- Add Missing Charters

Other Tasks

Filter

Submit

View

All Lines

Dataset

Show Transmitted

Yes

Line Numbers

to

Vessel

Name

Code

Shipping Dock

Start Date

/ Datasets /

AMERICAN COMMERCIAL LINES, LLC SEP 2012 (1830169) - R

Select All | Clear All

Dataset Contains 4,590 Lines With No Errors And 4,567 Transmitted (99%)

4,590 Lines Found Page 1 2 3 4 5 6 7 8 9 10 11 12 13 14 15 16 17 18 19 20 21 22 23 24 25 26 27 28 29 30 31 32 33 34 35 36 37 38 39 40 41 42 43 44 45 46 47 48 49 50 51 52 53 54 55 56 57 58 59 60 61 62 63 64 65 66 67 68 69 70 71 72 73 74 75 76 77 78 79 80 81 82 83 84 85 86 87 88 89 90 91 92

Line	T	Vessel	Shipped Received	Shipping Dock Receiving Dock	S	Commodity	Tonnage Alternates
1045	1	8M JOEY JOHN (20155) Σ	09/04/2012 09/05/2012	LM 120 (20120010) LM 107 (20107010)	A		
1046	1	8M JOEY JOHN (20155) Σ	09/05/2012 09/05/2012	LM 107 (20107010) LM 120 (20120010)	A		
1047	1	8M JOEY JOHN (20155) Σ	09/05/2012 09/05/2012	LM 120 (20120010) LM 108 (20108010)	A		
1048	1	8M JOEY JOHN (20155) Σ	09/05/2012 09/05/2012	LM 108 (20108010) LM 118 (20118502)	A		
1049	1	8M JOEY JOHN (20155) Σ	09/05/2012 09/05/2012	LM 118 (20118502) LM 092 (20095136)	A		
1098	1	8T ELIZA DEWEY (75743) Σ	09/03/2012 09/05/2012	LM 151 (20151302) LM 463 (21463010)	A		
1124	1	ACBL0200 (53142) Σ	08/16/2012 09/05/2012	UM 184.70 ACT WESTERN (30179325) LM 263.00 LA GEN PLNT (20262001)	A	300 COAL CJ (32100)	1,695 NT
1134	1	ACBL0204 (53146) Σ	08/25/2012 09/05/2012	LM 263.00 LA GEN PLNT (20262001) UM 184.70 ACT WESTERN (30179325)	A		
1143	1	ACBL0207 (53149) Σ	08/16/2012 09/05/2012	UM 184.70 ACT WESTERN (30179325) LM 263.00 LA GEN PLNT (20262001)	A	300 COAL CJ (32100)	1,225 NT
1146	1	ACBL0208 (53150) Σ	08/29/2012 09/05/2012	OR 976.00 LO.CAR WASH (40005010) UM 184.70 ACT WESTERN (30179325)	A		
1178	1	ACBL0221 (58472) Σ	08/26/2012 09/05/2012	LM 263.00 LA GEN PLNT (20262001) UM 184.70 ACT WESTERN (30179325)	A		
1181	1	ACBL0222 (58473) Σ	08/25/2012 09/05/2012	LM 263.00 LA GEN PLNT (20262001) UM 184.70 ACT WESTERN (30179325)	A		
1196	1	ACBL0229 (58481) Σ	08/24/2012 09/05/2012	UM 184.70 ACT WESTERN (30179325) LM 263.00 LA GEN PLNT (20262001)	A	300 COAL CJ (32100)	1,429 NT





Tasks

- Add Line
- Delete Selected Lines
- Code/Error Check
- Mark Completed
- Other Tasks

Filter

Submit

View

All Lines

Show Matches

Both

Line Numbers

to

Vessel Name

Lockage Date

Direction

Commodity

Legend

- Line with Errors
- Line without Errors
- Has Matching Movement
- No Matching Movement

/ Lock Datasets /

ALGIERS JUL 2012 (AA04)

Select All | Clear All

2,617 Lines With 212 Errors And 1,243 Matches (47%)

Line	Vessel Text	Vessel Name	Date	Direction	Commodity	Tonnage	Match
115	693109 (68338)	T. H. KELLY	07/04/2012 00:00	W	00		?
208	987498 (01703)	CHARLES W. CLARK	07/04/2012 00:00	W	00		✓
978	ACBL 3242 (71680)	ACBL3242	07/04/2012 00:00	W	00		✓
977	ACL 07110 (99104)	ACL07110	07/04/2012 00:00	W	00		✓
976	ACL 10174 (97398)	ACL10174	07/04/2012 00:00	W	00		✓
1009	AGS 191 (65030)	AGS191	07/04/2012 00:00	W	00		✓
1008	AGS 777 (29707)	AGS777	07/04/2012 00:00	W	00		✓
960	ART 347 (27416)	ART347	07/04/2012 00:00	W	00		✓
1003	ART 35229 B (63364)	ART35229B	07/04/2012 00:00	E	47	1,500 NT	✓
971	B 0735 (45671)	B735	07/04/2012 00:00	W	43	1,400 NT	?
970	B 0758 (45698)	B758B	07/04/2012 00:00	W	43	1,600 NT	?
969	B 0772 (46125)	B772B	07/04/2012 00:00	W	43	1,600 NT	?
985	BIG 302 (21063)	BIG302B	07/04/2012 00:00	W	52	1,500 NT	?
984	BIG 405 (48731)	BIG405	07/04/2012 00:00	W	52	1,500 NT	?
997	CARLA JEAN		07/04/2012 00:00	E	71	1,200 NT	?
956	CBC 1272		07/04/2012 00:00	W	00		?
1007	CC 1147 (76618)	CC1147B	07/04/2012 00:00	W	00		✓
1006	CC 1152 (75660)	CC1152B	07/04/2012 00:00	W	00		✓
1005	CC 1189 (76605)	CC1189B	07/04/2012 00:00	W	00		✓
983	CCL 26 (45760)	CCL26	07/04/2012 00:00	W	00		?
974	CM 14 (04488)	CM14B	07/04/2012 00:00	E	71	250 NT	✓
957	CMS 1602 (65689)	CMS1602	07/04/2012 00:00	E	26	1,500 NT	?
991	CTCO 3021 (04788)	CTCO3021	07/04/2012 00:00	E	00		✓
989	CTCO 303 (04256)	CTCO303	07/04/2012 00:00	E	21	3,400 NT	✓



Waterborne Commerce Statistics

Overview Journal VOR Docks Locks Master Data Charter Reports Logout

Tasks

- Add Line
- Delete Selected Lines
- Code/Error Check
- Statistics
- Send Correspondence
- Mark Completed

Other Tasks

Filter

Submit

View

All Lines

Show Matches

Both

Line Numbers

to

Vessel Name

Transfer Date

Commodity

Legend

- Line with Errors
- Line without Errors
- Has Matching Movement
- No Matching Movement

/ Dock Datasets /

AQUILA DOCK INC NOV 2012 (42006201)

Select All | Clear All

126 Lines With 1 Errors And 45 Matches (36%)

Line	Vessel	Date	Type	Commodity	Tonnage	Match
1	C548 (99765)	11/01/2012	S	COAL (32100)	1,551 NT	✓
2	ACBL3242 (71680)	11/02/2012	S	COAL (32100)	1,484 NT	✓
3	OR5160 (72453)	11/05/2012	S	COAL (32100)	1,719 NT	✓
4	OR7018 (74645)	11/05/2012	S	COAL (32100)	1,718 NT	✓
5	OR9050 (74032)	11/05/2012	S	COAL (32100)	1,789 NT	✓
6	ACL10107 (97788)	11/06/2012	S	COAL (32100)	1,508 NT	✓
7	C184 (02961)	11/06/2012	S	COAL (32100)	1,580 NT	✓
8	C223 (04281)	11/06/2012	S	COAL (32100)	1,567 NT	✓
9	CTC9912 (23901)	11/08/2012	S	COAL (32100)	1,600 NT	?
10	C1256 (96623)	11/09/2012	S	COAL (32100)	1,657 NT	✓
11	CTC0914 (97911)	11/12/2012	S	COAL (32100)	1,591 NT	?
12	OR4790 (71132)	11/12/2012	S	COAL (32100)	1,704 NT	✓
13	OR4817 (71831)	11/12/2012	S	COAL (32100)	1,720 NT	✓
14	OR5153 (72439)	11/13/2012	S	COAL (32100)	1,527 NT	✓
15	C315 (15704)	11/13/2012	S	COAL (32100)	1,563 NT	✓
16	C495 (99631)	11/13/2012	S	COAL (32100)	1,557 NT	✓
17	C418 (35804)	11/14/2012	S	COAL (32100)	1,538 NT	✓
18	C234 (04297)	11/14/2012	S	COAL (32100)	1,563 NT	✓
19	CTC0214 (40530)	11/15/2012	S	COAL (32100)	1,618 NT	?
20	C576 (99871)	11/15/2012	S	COAL (32100)	1,548 NT	✓
21	C832 (69711)	11/15/2012	S	COAL (32100)	1,569 NT	✓
22	C444 (36081)	11/16/2012	S	COAL (32100)	1,555 NT	✓
23	C419 (35808)	11/16/2012	S	COAL (32100)	1,560 NT	✓



Waterborne Commerce Statistics

Overview | Journal | VOR | Docks | Locks | Master Data | Charter | Reports | Logout

Tasks

Add Line To

Add Line From

Code/Error Check

Delete Selected Lines

Other Tasks

Filter

Submit

View

Reporting Lines ▼

Vessel

Name

Code

Operator

From Operator Name

From Operator Code

To Operator Name

To Operator Code

Date Range

Begin

End

[/ Charter Operators /](#)

FLOWERS, J. RUSSELL, INC. (3104964) - T

[Select All](#) | [Clear All](#) 288 Manually Entered Lines and 8 Errors between 01/01/2010 and 12/31/2012

ID <input type="checkbox"/>	Vessel	From Operator	To Operator	Start Date	Off Date
24638	CHARLOTTE ROUSH (47061)	FLOWERS, J. RUSSELL, INC. (3104964) - T	AEP (2090083) - R	01/01/2010	
24640	SAFETY FIRST (45438)	FLOWERS, J. RUSSELL, INC. (3104964) - T	AEP (2090083) - R	01/01/2010	
24641	SAFETY TEAM (58251)	FLOWERS, J. RUSSELL, INC. (3104964) - T	AEP (2090083) - R	01/01/2010	
24643	CHARLOTTE ROUSH (47061)	FLOWERS, J. RUSSELL, INC. (3104964) - T	AEP (2090083) - R	01/01/2010	
27070	CHARLOTTE ROUSH (47061)	FLOWERS, J. RUSSELL, INC. (3104964) - T	AEP RIVER OPERATIONS (2090083) - R	04/29/2010	
27137	FMT 3015 (29960)	FLOWERS, J. RUSSELL, INC. (3104964) - T	AEP RIVER OPERATIONS (2090083) - R	04/26/2010	
28072	RF 350B (38561)	FLOWERS, J. RUSSELL, INC. (3104964) - T	AEP RIVER OPERATIONS (2090083) - R	04/26/2010	
28231	RF 601B (02534)	FLOWERS, J. RUSSELL, INC. (3104964) - T	AEP RIVER OPERATIONS (2090083) - R	04/23/2010	

Lock Information

Location and physical characteristics
of Corps Locks

Record for each lockage

Times –Arrival, Start/End Lockage

Commodity and Tonnage

Direction of Travel

Number & Type of Vessels

Flotilla Size and Number of Barges

Time and reason for lock stoppages

Data recorded by Lock Operator



Lock Data Uses

- Essential for Planning & Economic Studies
- Risk Assessment & Emergency Management
- Actual Waterway Traffic and Lock Status
- Assists in Maintenance Scheduling
- Performance Information
- Data Quality Check For WCSC
- Used to review and evaluate lock usage and manpower needs



LPMS/OMNI

- Previously two data entry protocols collecting the same baseline data, LPMS and OMNI have now been merged
- Hydrology information is now collected in LPMS for locks that previously used OMNI to do so.
- Data loaded weekly into the lock data warehouse
- National statistics come from the data warehouse



New LPMS Home

<https://lpms.usace.army.mil>



US Army Corps of Engineers Lock Performance Monitoring System

Program Manager: Ginny Pankow
Phone: 703-428-9047
Fax: 703-428-6047
Email:
ceiwr-ndc.lpms@usace.army.mil

U.S. Army Corps of Engineers
Navigation Data Center
7701 Telegraph Road
Casey Building,
#2594, Room 220A
Alexandria, VA 22315-3868

Logout

General Information

- o [User's Guide](#)
- o [News \(UPDATED: 01 March 2013\)](#)
- o [Reports](#)
- o [Training Videos](#)
- o [POC List](#)
- o [ACCB Members](#)
- o [ACCB Actions](#)
- o [Message System Help](#)

Lock Staff

- o [Arrivals Screen](#)
- o [Flotillas Screen](#)
- o [Operations Screen](#)
- o [Stall Stoppage Screen](#)
- o [Hydrology](#)
- o [Edit Screens \(Ops, Flotillas, Barges\)](#)
- o [Vessel Table Maintenance](#)

Admin

- o [QA Reports](#)
- o [Delete Operation/Flotilla](#)

[Refresh Messages](#) [Create Message](#) [Edit Message](#)

Message ID	Message Subject	Message Text	Message Creator	Create
2	OVERRIDE GLITCH	Details in the LPMS NEWS.	Q0NDCDEW	2013/03/01 1
1	VESSEL NAME CHANGE	Please read the LPMS NEWS regarding when to change vessel names.	Q0NDCDEW	2013/03/01 1



Entering Lockage Data

LPMS - Operations Main Screen

User ID: Q0NDCSDR

Lock: 31 OPS ID: 4236955 Previous End of Lockage: 05/03/2012 12:05
Downbound - Override = NO (Change to [YES](#)) Timezone: CDT Today's Date: 05/10/2012 OPS ID: 4252478

301

* Chamber No: 1 ▾	* Direction: Downbound ▾	Multi Vessel: <input type="radio"/> Yes <input checked="" type="radio"/> No	Boats: Light <input type="text"/> Rec <input type="text"/>
	<u>Stall Stoppages</u>	<u>Signal and Departure</u>	

Traffic Information

(1 - Get AIS Times)	<u>* Vessel Name:</u>	<u>* Lockage</u>	<u>Flotilla #:</u>	<u>Arrival Date</u>	<u>SOL Date:</u>
	AUSTIN GOLDING (TOW)	Type: S	2606301	(MM/DD/YYYY HH24MI): 05/10/2012 1331	05/10/2012 1400
			Multi-Cut		
	Bow Over Sill:	End of Entry:	Start of Exit:	EOL Date:	Nbr Cmrcel
	05/10/2012 1405	05/10/2012			Passgrs:
	<u>Vessel Function Type:</u> T	Origin:	Destination:		
	Done	Partial Save	Another Vessel	Add Vessel Assist	1 ▾ Delete Help





Welcome: Q0NDCSDR [Logout](#)


Selection Criteria

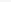
Go

EROC:

River Code:

Lock No:

Chamber No: 

Begin Stop Date: 

End Stop Date:

Scheduled: ☒ Yes ☐ No

Reason: Number of Hardware Cycles:

Comments:

Add

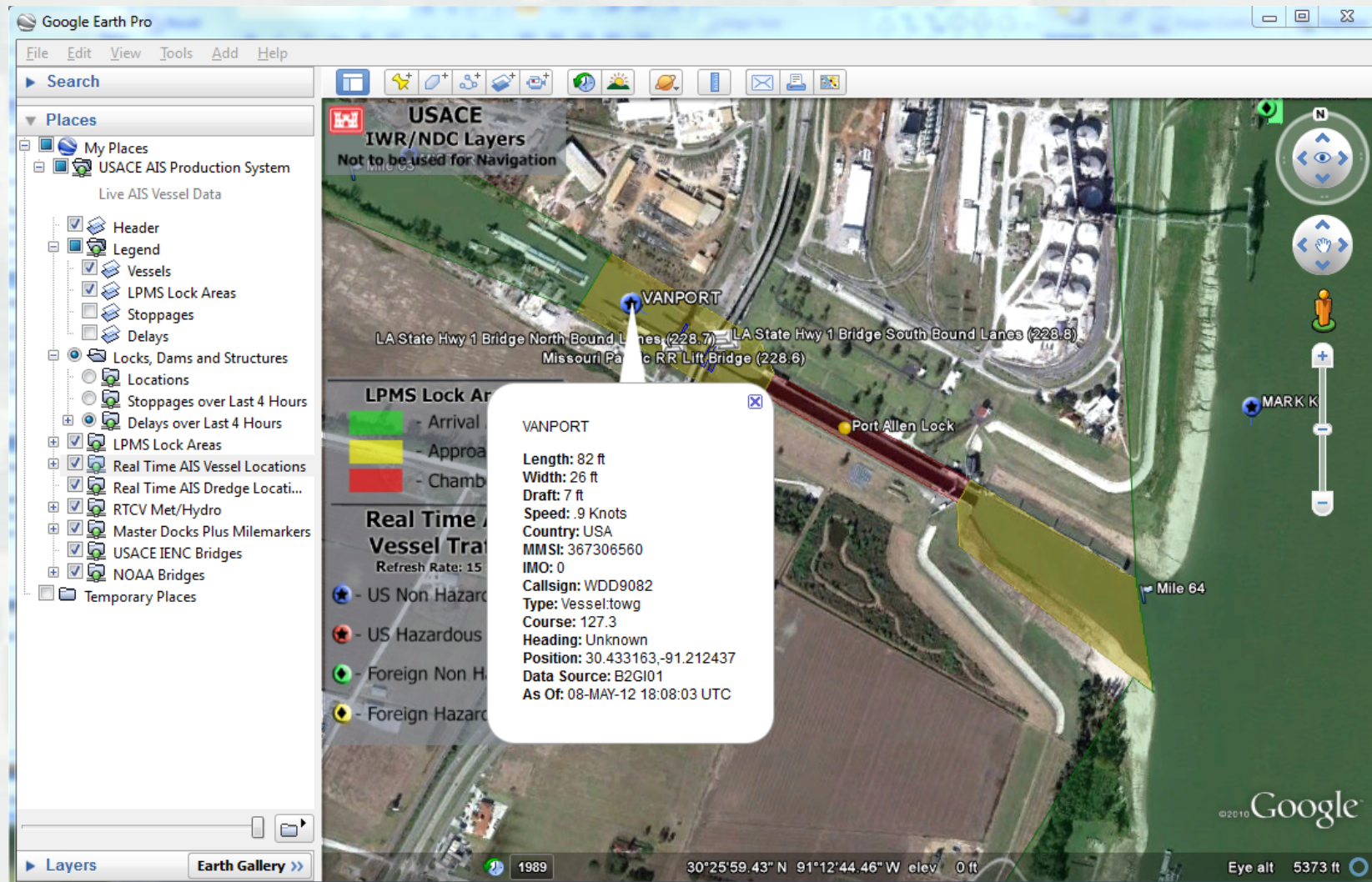


AIS Enhanced Information

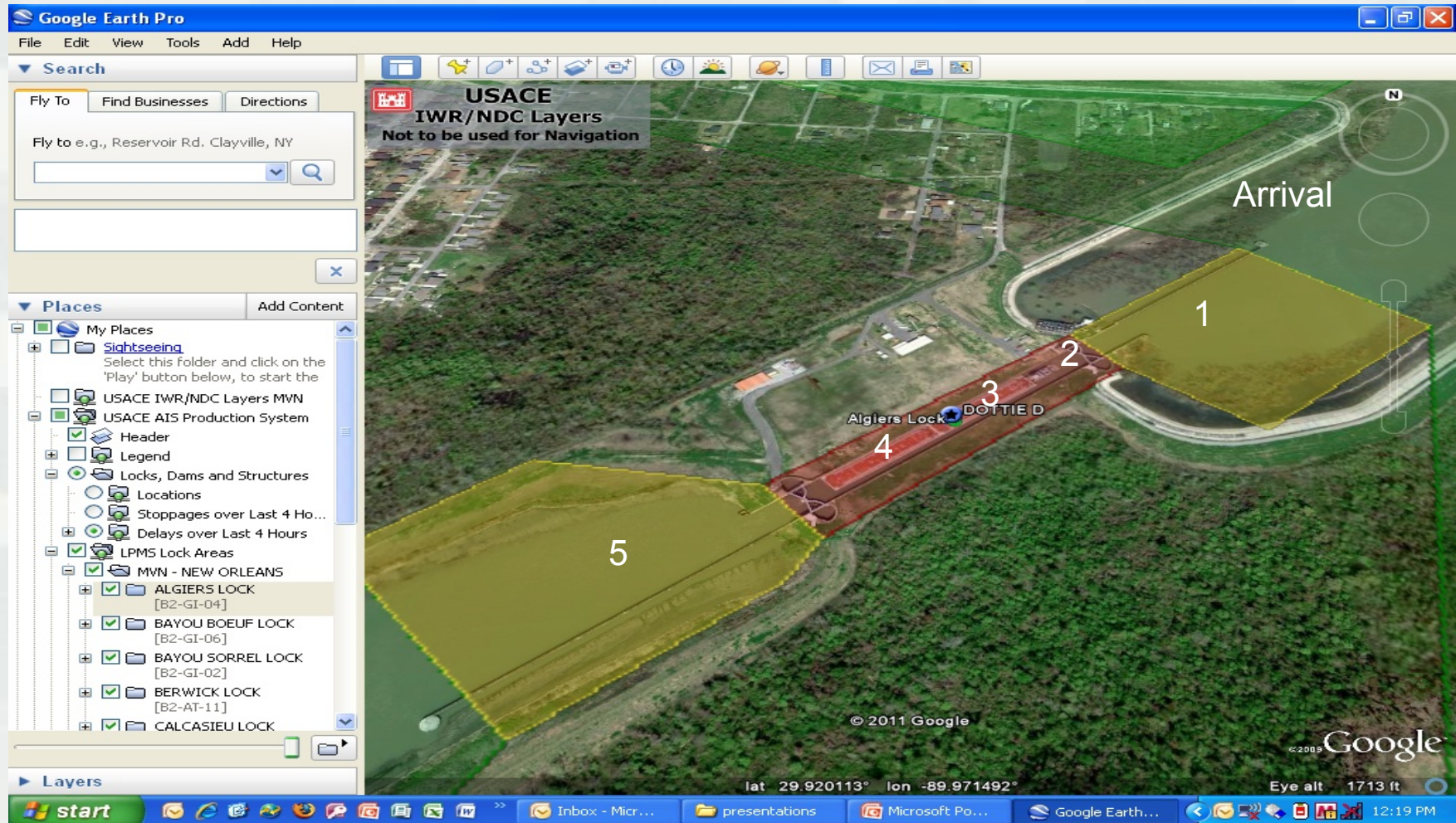
- Lock Operator
 - ▶ Situational Awareness
 - ▶ Increased Safety
 - ▶ Flexibility in planning maintenance
- Data Collection
 - ▶ Automatic Collection of lock timing events (MVN locks)
 - ▶ Receivers have been installed at additional districts (MVR, MVP and LRH)
 - ▶ Automatic collection is pending the next phase of LPMS development



Port Allen Lock Operator View



Real Time Data Collection



Getting Info to Industry

<http://corpslocks.usace.army.mil>



US Army Corps of Engineers
Lock Performance Monitoring System

Welcome to Corps Locks!

The Corps Locks website contains lock and vessel specific information derived from the United States Army Corps of Engineers Lock Performance Monitoring System (LPMS). The information contained here represents a half-hourly updated snapshot of Freedom of Information Act (FOIA) data on U.S. flag vessels and foreign vessels operating in U.S. waterways that transited a Corps-owned or operated lock structure. Detailed information on specific companies or commodities is considered privileged and is not included in the Corps Locks website.

[Find a Vessel](#)

[Lock Queue Report](#)

[Lock Status Report](#)

[Tonnage Report](#)

[Data Web Services](#)



[Accessibility](#)
[Link Disclaimer](#)

[FOIA](#)
[Privacy and Security](#) [Contact Us](#)
[Information Quality](#)

Getting Info to Industry - Facebook

facebook  Search for people, places and things   Dick Ash Find Friends





Corps Locks

150 likes · 3 talking about this

Government Organization
The Corps Locks website contains half-hour lock and daily vessel information derived from the US Army Corps of Engineers Lock Performance Monitoring System (LPMS).

About Photos Likes Twitter

Highlights ▾

**Corps Locks**
February 23 

Software maintenance and security patching are complete as of 1600 ET. As the locks enter data that occurred during the outage, the Corps Locks website will update each half-hour with new data. Thank you for your patience.

Like · Comment · Share

**Corps Locks**
February 21 

ADVANCED NOTICE: Corps Locks is scheduled to be unavailable Saturday, 23 Feb 2013 from 1200 - 1600 Central Time for software maintenance and security patching. It will be posted if the work is completed sooner and the site is available.

Like · Comment · Share 21

 3 people like this.



BUILDING STRONG®

Getting Info to Industry - Twitter

Home Connect Discover Me

Tweets

Following

Followers

Favorites

Lists

Tweet to Corps Locks

@corpslocks

Who to follow · Refresh · View all

Comcast SportsNet @CSNP...
Promoted · Follow

kbohls @kbohls
Follow

Trent Dilfer @TDESPN
Follow

Browse categories · Find friends

Trends · Change

Evgeni Malkin

Jeb Bush

#InitialsOfSomeoneYouCareAbout

#FictionalCharactersIWanToMarry

#sxswedu

#replaceplaytitleswithDRAGON

#mfc

Tito

Anthony Spencer

HIV

Corps Locks @corpslocks

Corps Locks contains lock and vessel information from the US Army Corps of Engineers Lock Performance Monitoring System .
<http://corpslocks.usace.army.mil>

56 TWEETS 0 FOLLOWING 11 FOLLOWERS

Follow

Tweets

Corps Locks @corpslocks Feb 23
Software maintenance and security patching are complete as of 1600 ET. The Corps Locks website will update as data is entered.
Expand

Corps Locks @corpslocks Feb 20
ADVANCED NOTICE: Corps Locks is scheduled to be unavailable Saturday, 23 Feb 2013 from 1200 - 1600 Central Time for software maintenance.
Expand Reply Retweet Favorite More

Corps Locks @corpslocks Feb 13
Corps Locks data center lost power 12Feb2013 @ 2240 ET. Power restore ETA is 13Feb2013, 1100 ET. Data will update one hour after restoration
Expand

Corps Locks @corpslocks Feb 11
Afternoon 11 Feb 2013, if Chickamauga Dam flows & tailwater rises above EL 644.50, Chickamauga Lock will close to navigation.



BUILDING STRONG®

Getting Info to Industry – Web Services

http://corpslocks.usace.army.mil/lpwb/xml.traffi...

```
<?xml version="1.0" ?>
- <ROWSET>
- <ROW>
  <EROC>B2</EROC>
  <RIVER_CODE>GI</RIVER_CODE>
  <RIVER_NAME>GULF INTRACOASTAL WATERWAY</RIVER_NAME>
  <LOCK_NO>01</LOCK_NO>
  <LOCK_NAME>PORT ALLEN LOCK</LOCK_NAME>
  <DIRECTION>U</DIRECTION>
  <VESSEL_NO>0564973</VESSEL_NO>
  <VESSEL_NAME>CAPT WHITEY (TOW)</VESSEL_NAME>
  <ARRIVAL_DATE>03/06/13 06:52</ARRIVAL_DATE>
  <SOL_DATE>03/06/13 07:20</SOL_DATE>
  <END_OF_LOCKAGE>03/06/13 08:12</END_OF_LOCKAGE>
  <TIMEZONE>CST</TIMEZONE>
  <NUM_BARGES>5</NUM_BARGES>
  <HAZARD_CODE>N</HAZARD_CODE>
</ROW>
- <ROW>
  <EROC>B2</EROC>
  <RIVER_CODE>GI</RIVER_CODE>
  <RIVER_NAME>GULF INTRACOASTAL WATERWAY</RIVER_NAME>
  <LOCK_NO>01</LOCK_NO>
  <LOCK_NAME>PORT ALLEN LOCK</LOCK_NAME>
  <DIRECTION>D</DIRECTION>
  <VESSEL_NO>1204198</VESSEL_NO>
  <VESSEL_NAME>MATAGORDA ( TOW 72X30 )</VESSEL_NAME>
  <ARRIVAL_DATE>03/06/13 05:47</ARRIVAL_DATE>
  <SOL_DATE>03/06/13 06:24</SOL_DATE>
  <END_OF_LOCKAGE>03/06/13 07:08</END_OF_LOCKAGE>
  <TIMEZONE>CST</TIMEZONE>
  <NUM_BARGES>2</NUM_BARGES>
  <HAZARD_CODE>N</HAZARD_CODE>
</ROW>
- <ROW>
  <EROC>B2</EROC>
  <RIVER_CODE>GI</RIVER_CODE>
  <RIVER_NAME>GULF INTRACOASTAL WATERWAY</RIVER_NAME>
  <LOCK_NO>01</LOCK_NO>
  <LOCK_NAME>PORT ALLEN LOCK</LOCK_NAME>
  <DIRECTION>U</DIRECTION>
  <VESSEL_NO>1174266</VESSEL_NO>
  <VESSEL_NAME>EMS EXPRESS (TOW)</VESSEL_NAME>
```



Getting Info to Industry –Reports

Lock Performance Monitoring System

Home > Lock Queue Report

Selection Criteria

Select a river system and a lock, then click the Submit button to view a report of the most recent vessel traffic reported at the lock.

Select a River System:

Select a Lock:

Avg Transit in Minutes: 32

Avg Delay in Minutes: 116







Report Runs Half-Hourly: Last Updated (EST) 05/08/12 02:15 PM

Most Recent Lockages

Vessel Name	Vessel No	Direction	Nbr of Barges Proc	Arrival Date	SOL Date	End of Lockage	Timezone
GEORGE ALLEN (TOW 2011)	1236451	U	0	05/08/12 21:51	-	-	CST
EL SOL DE CARIBE (TOW)	0635888	D	6	05/08/12 11:38	-	-	CST
RV IHNC (REC)	RV03IHNC	D	0	05/08/12 10:40	05/08/12 10:50	05/08/12 11:08	CST
TIFFANY G BARROIS (TOW)	0570130	U	4	05/08/12 10:20	-	-	CST
JOANNE STEGBAUER (TOW)	0579809	U	8	05/08/12 10:15	-	-	CST
KATIE GONSOLIN (TOW)	1191866	D	2	05/08/12 06:55	-	-	CST
KACIE LUHR (TOW)	1083044	D	6	05/08/12 05:51	-	-	CST
NELDA FAYE (TOW)	0534188	D	1	05/08/12 05:35	-	-	CST
BIG AL (TOW)	0599084	D	1	05/08/12 05:10	-	-	CST
MR WAYNE (TOW 62X26)	0607444	D	1	05/08/12 04:45	05/08/12 09:00	05/08/12 10:38	CST
WHITEWING (TOW)	0558867	U	3	05/08/12 03:30	-	-	CST
ALICE JEAN (TOW 55X24)	0626646	U	1	05/08/12 01:32	-	-	CST
PAIGE GERTRUDE (TOW)	0610520	U	2	05/07/12 23:50	-	-	CST
SILVER FOX (TOW)	0258967	U	0	05/07/12 21:14	05/07/12 21:57	05/07/12 22:09	CST
MR PETE (TOW 1981) 56X24	0641524	U	3	05/07/12 20:27	-	-	CST

[Export to CSV](#)

1 - 15 [Next >](#)

[Accessibility](#)
[FOIA](#)
[Contact Us](#)

[Link Disclaimer](#)
[Privacy and Security](#)
[Information Quality](#)




Navigation Data Center Home Page - Microsoft Internet Explorer provided by LRH 6.0

http://www.ndc.iwr.usace.army.mil//






File Edit View Favorites Tools Help Links Convert Select

Navigation Data Center Home Page



Welcome to the US Army Corps of Engineers Navigation Data Center

Tuesday, June 14, 2011 12:56:14 PM

Waterborne Commerce Vessel Characteristics Port Facilities Dredging Information Lock Use, Performance, Characteristics

Click on the pictures above for detailed information by subject area

Click on the links below for new additions, related links, monthly indicators, maps and data

and U S Territories; Waterborne Tonnage for Principal Ports and all 50 States; WCUS All Parts 1 - 5; W1


Site Index

Site Index - Select One:

[USACE Headquarters](#)

[Institute for Water Resources Home](#)

[Navigation Notices](#)



[USAGov](#)

[Search Government Websites](#)

[Search the NDC Site](#)

[Facts](#)

[Publications](#)

[Monthly Indicators](#)

[About NDC](#)

[Related Links](#)

[Foreign Waterborne Transportation](#)

[DATA for downloading](#)

[Metadata](#)


[GIS](#)

[Eroc Codes](#)

[Waterborne Commerce](#) | [Vessel Characteristics](#) | [Port Facilities](#)
[Dredging Contracts](#) | [Lock Statistics](#)

[Privacy Notice](#)
 Comments or Questions Contact:
[NDC](#)
 U.S. Army Corps of Engineers
 Institute for Water Resources
 Navigation Data Center
 7701 Telegraph Rd
 Alexandria, VA 22315
 1-800-368-6884

USACE Home



Div Dist Ctr Lab **FOA**
Civil Works You Are Here



BUILDING STRONG®

New Data Initiatives

- Federal Industry Logistics Standardization (FILS)
- Master Docks Plus
- Federal Initiative for Navigation Data Enhancement (FINDE)
- River Information System (RIS)



BUILDING STRONG®

FILS - Background

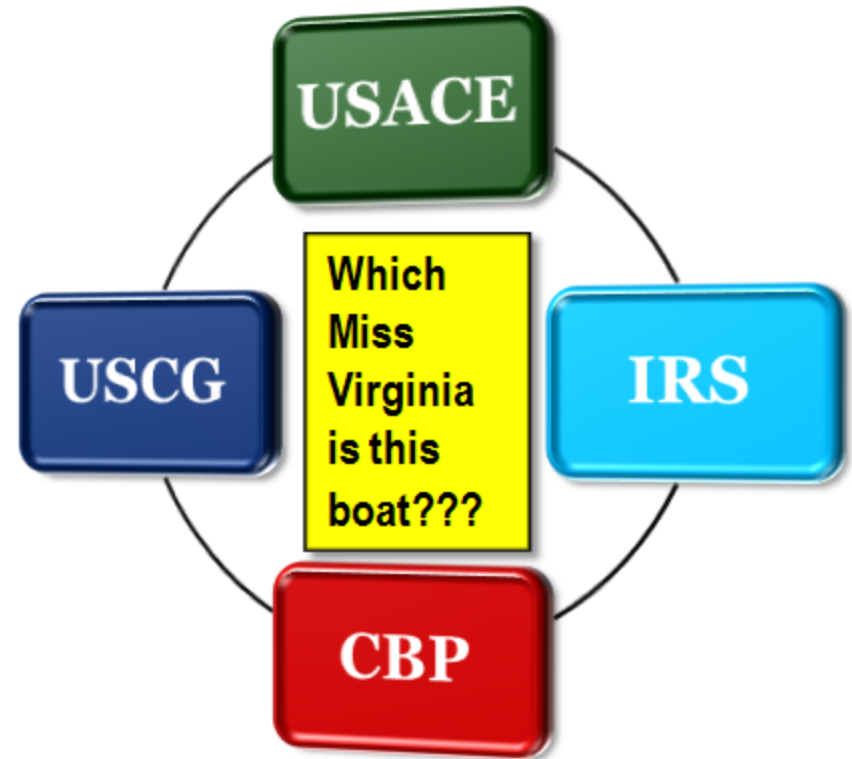
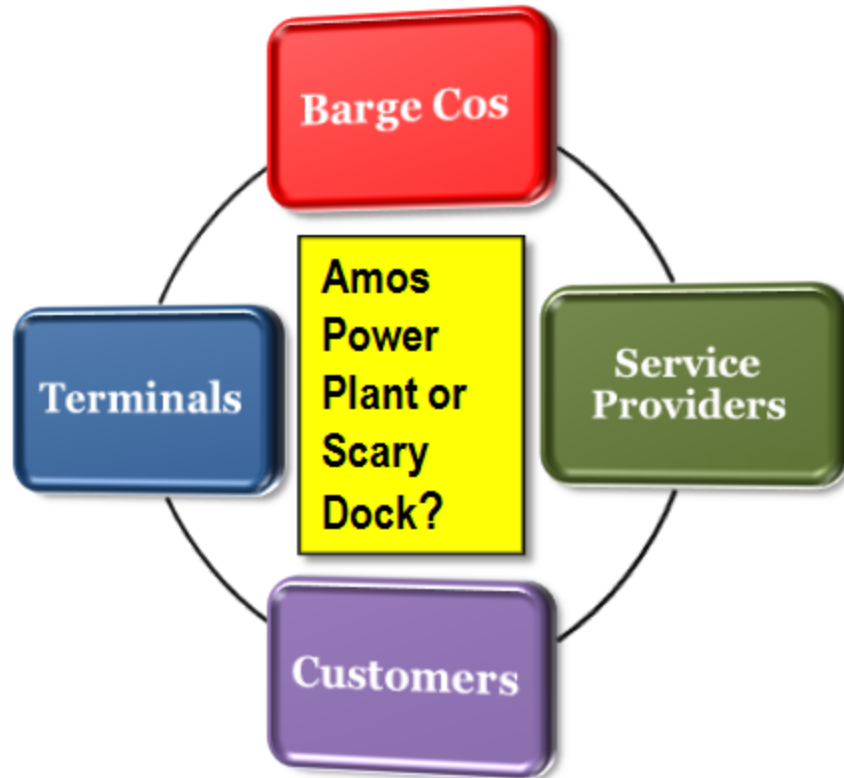
The Challenge

- ▶ Industry and Government discovered that they have the same issue with regards to:
 - U.S. Navigation Points of Interest – Locations, Mile Points, Rivers
 - Vessels – Boats & Barges
 - Commodities - Freight
- ▶ No one organization or agency uses a standard name, identifier or term
- ▶ This leads to confusion, errors and wasted time & money



BUILDING STRONG®

FILS - Background



FILS - Background

The Challenge

- ▶ Industry and Government had embarked on separate efforts to improve the accuracy, timeliness and completeness of the navigation information shared electronically within their respective communities.



BUILDING STRONG®

FILS - Yesterday

Guiding Principles

- ▶ Accepted by Industry
- ▶ Accepted by Federal Agencies
- ▶ Usable in multiple transmission formats
- ▶ Adhere to international standards
- ▶ The work product of FILS should provide the foundation which makes it possible for the individual communities inside and outside of our industry to share information in a method and format that is **Common, Non-proprietary** and an **Open Standard**



BUILDING STRONG®

FILS - Today

- ▶ Locations - Over 40,000 Navigation Points of Interest catalogued with unique IDs
- ▶ Bridges, locks and chambers have been catalogued
- ▶ Vessels - Over 52,000 vessels catalogued with unique IDs
- ▶ Location & vessel standard information is available to all
- ▶ FILS standard data is recognizable by USACE, USCG, IRS, CBP & Industry (when trading electronically).
- ▶ Industry traded over 1.2M standard electronic messages in 2012.
(Orders, Order Responses, Invoices, Boat Status, Barge Status, Tow Diagrams, Acknowledgements)

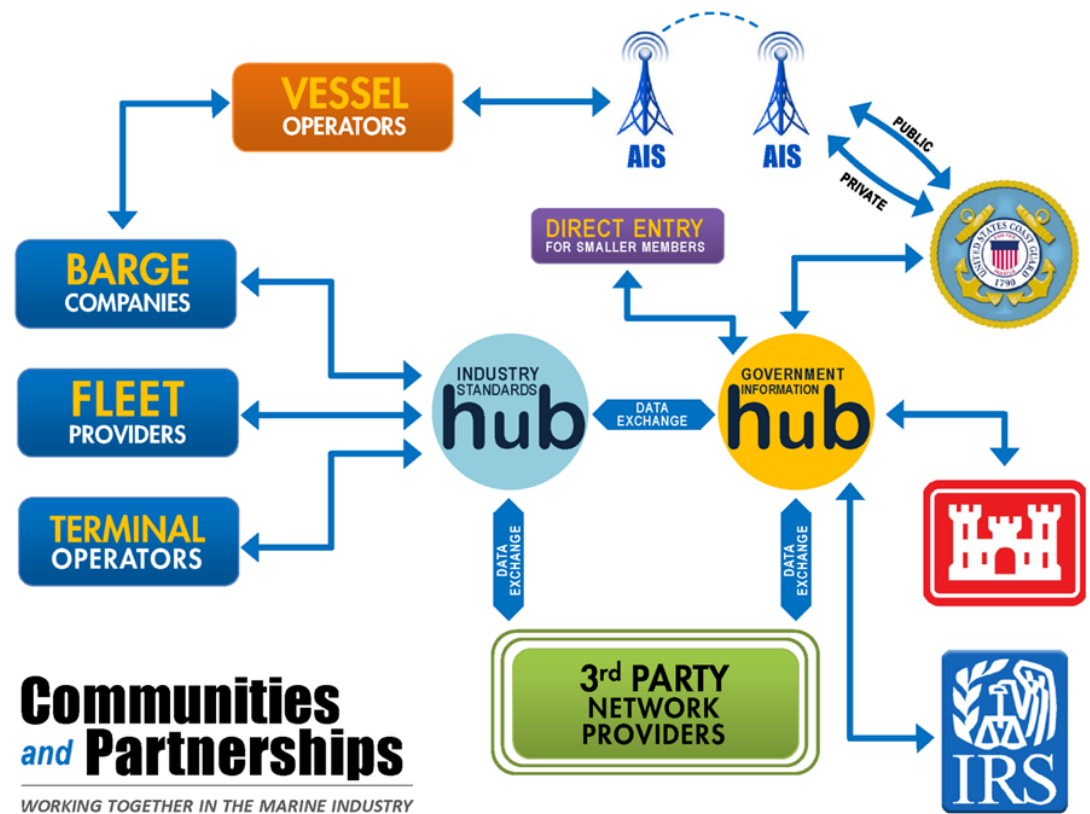


BUILDING STRONG®

FILS - Tomorrow

Built on what is in place today

- ▶ Consistent and accurate information regardless of communication method
- ▶ Common standard for information
- ▶ Open standard of messaging
- ▶ Non-proprietary



BUILDING STRONG®

Master Docks Plus

- **Merge 2 Corps Dock Databases**
 - Port Series
 - WCSC Master Docks
- **Develop Process for Update and Maintenance**
 - No more facility visits
 - Email/phone surveys
 - Electronic input from industry



BUILDING STRONG®

Master Docks Plus V1.40: Single Navigation Unit, Welcome h1ncxjra

File View Issues Surveys Tools Outputs Map Options Queries

Read Mode

US Army Corps of Engineers **Master Docks Plus**

General Details Descriptions Dock Administration

GUID: 29389 Official Name: APPALACHIAN POWER CO., JOHN E

Parent or Child: Parent Data Status: Validated for TOWS APPALACHIAN POWER CO., JOHN E. AMOS PLANT, SCARY DOCKS

Location Code: 42339 Dock Code: 202 Base34 GUID: 0RED

Facility Type: Dock UN Loc Code: DZQ UN Loc GUID: DZQ0RED

Port: Port Code: 2348 Name: PORT OF HUNTINGTON - TRL...

WTWY: Water... Code: 2027 Name: KANAWHA RIVER, WV

Handles Containers: ☐ Ferry Terminal ☐ Yes ☐ No ☐ Unknown

Cargo: ☐ Yes ☐ No ☐ Unknown ☐ Domestic ☐ Foreign ☐ Both ☐ Unknown

Hazardous: ☐ Yes ☐ No ☐ Unknown

Throughput: 0 /year

LPMS Code	Commodity	Amount	Units	Period
70	All Manufactured Equipment, Ma...			
23	Distillate,Residual & Other Fuel O...			
10	Coal,Lignite & Coal Coke			

Add Delete

District EROC: H1 Code: 20 Name: Huntington

State Postal Code: WV FIPS: 54 Name: West Virginia

County FIPS Code: 79 Name: Putnam

Congressional District FIPS: 02 Congress: 110

Public Domain Region Code: 7 Name: Ohio River System

BEA Economic Area Code: 29 Name: Charleston, WV

CBSA Code: 16620 Name: Charleston, WV

HUC: 05050008

Vessel Calls: Timeframe:

IRS TCN	Vessel Type	Description

Add Delete

Map Dock Picture Neither Locate Pan Identify Measure

Latitude: 38.472682 Longitude: -81.821724 GoTo Lat/Lon

Latitude Degrees: 38 Minutes: 28 Seconds: 21.6552 GoTo Lat/Lon

Longitude Degrees: -81 Minutes: -49 Seconds: -18.2064

Actual General Unknown

Horizontal Datum: NAD83 Verification: Verified Field Update

TOWS Link Num: 2019 Select

GIS Waterway Link Num: 201919 GIS Waterway Type: 6

Mile: 39 Mile Decimal: .8 Milept_ID: 9437 Select

River Datum: TOWS Mile: 39

River Name: KANAWHA Bank: Left

River Code: KA Lock Code: 01 Name: WINFIELD

CWIS Code	CWIS	LI Code	Local Indicator
8720	KANAWHA RIVER LOCKS ...	S0654	KANAWHA RIVER LOCKS ...

Add Delete

Previous Dock 1 of 5 Next



Master Docks Plus V1.40: Single Navigation Unit, Welcome h1ncxjra

File View Issues Surveys Tools Outputs Map Options Queries

Predefined Map Themes

Read Mode

US Army Corps of Engineers **Master Docks Plus**

General Details **Descriptions** Dock Administration

GUID: 32529 Official Name: Appalachian Power Co., John E. Amos I
 Parent or Child: Child Data Status: Valid Appalachian Power Co., John E. Amos Plant, Scary Coal-Unloading Dock.
 Location Code: 42339 Dock Code: 202 Base34 GUID: 0U4R
 Facility Type: Dock UN Loc Code: DZQ UNLoc GUID: DZQ0U4R
 Port: Port Code: 2348 Name: PORT OF HUNTINGTON - TRL..
 WTWY: Water... Code: 2027 Name: KANAWHA RIVER, WV

Handles Containers: ☐ Ferry Terminal ☐ Yes ☐ No ☐ Unknown
 Cargo: ☐ Yes ☐ No ☐ Unknown
☐ Domestic ☐ Foreign ☐ Both ☐ Unknown
 Hazardous: ☐ Yes ☐ No ☐ Unknown
 Throughput: /year

Purpose: Mooring barges for fleeting; and occasional receipt of coal for plant consumption.

Construction: Row of fifteen 15- to 30-foot-diameter, concrete-capped steel-sheet-pile cellular breasting dolphins.

Mechanical Handling: Steel frame supports continuous bucket-unloader cantilevered over barge berth served by a 72-inch, electric belt-conveyor extending to crusher-and-preparation plant in rear; rate 4,000 tons per hour. Cable-and-winch

Remarks: Open storage area at rear has capacity for approximately 1,800,000 tons of coal. Wharf has capacity for mooring twenty empty-and-loaded barges above and below.

Berthing Largest: 1710 Berthing Total: 1710
 Deck Minimum Height: 17 Deck Max Height: 18
 Depth Smaller Max: 10 Depth Larger Max: 10 Vertical Datum: NPE (No...)

Railway Connection: Thirteen 700-car-capacity surface tracks in rear; connect with CSX Transportation, Inc.
 Highway Connection: Via plant roads, asphalt and gravel, various widths; from U.S. Highway 35, asphalt, 24 feet wide.

Map Dock Picture Neither Locate Pan Identify Measure

Location: Mile 39.8, left bank, Kanawha River, approximately 2.7 miles below Scary.

Navigation Unit's Dock Images

Image Name	Description	File Type	Default Image

View Add Delete

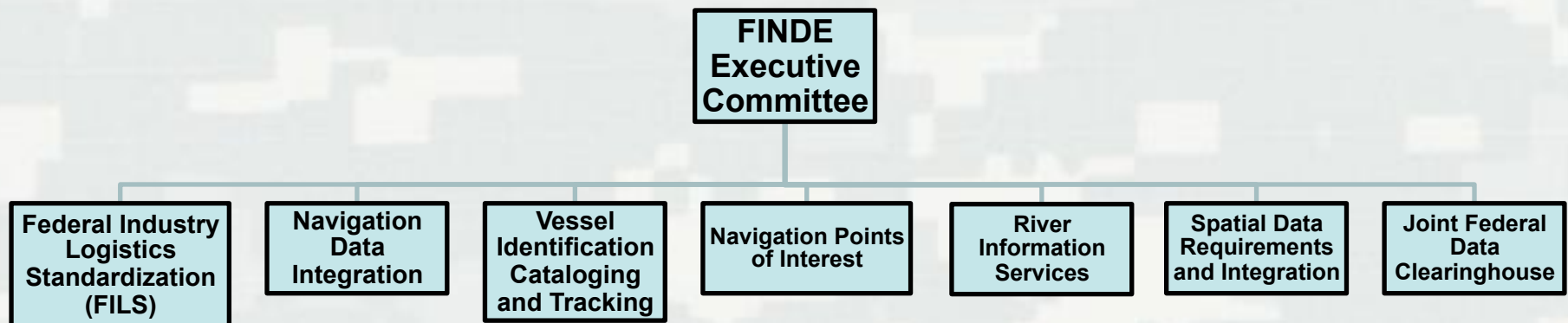
Previous Dock 2 of 5 Next



Federal Initiative for Navigation Data Enhancement (FINDE)

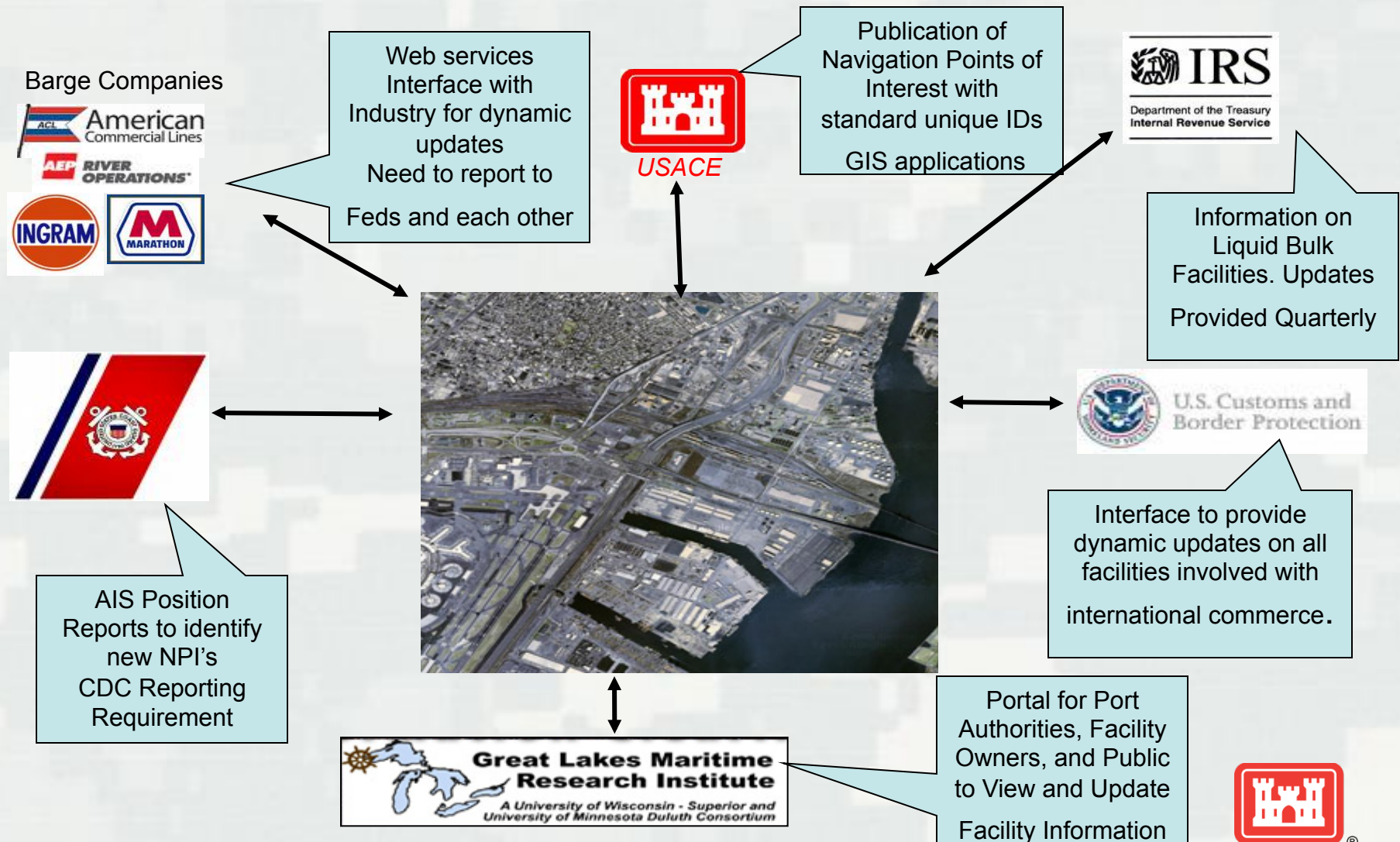
FINDE is an effort to provide an integrated set of complete, precise, and reliable navigation data for managing our Nation's waterways making successful capital investment decisions.

- Partners: USCG, IRS, Customs and Border Protection (CBP) and USACE
- Purpose: To develop a federally integrated navigation data set.



BUILDING STRONG®

FINDE – Agency Roles



FINDE Task Teams

- **Navigation Data Integration**
 - ▶ Leverage navigation information and services to create a federally integrated common picture
 - ▶ Leverage AIS information across the Federal Government
 - ▶ Information for project management, capital investment, forecasting, and modeling
 - ▶ Identify carriers of taxable product
- **Vessel Identification, Cataloging, and Tracking**
 - ▶ Harmonize and validate vessel information from a Federal perspective
 - ▶ Establish a common and central source for vessel information
 - ▶ Managed by the Coast Guard
 - ▶ Standard Vessel ID (Official Number)
- **Navigation Points of Interest**
 - ▶ Leverage the Corps' inventory of navigation points of interest
 - ▶ Increase intelligence for safety and inspection
- **FILS Coordination**
 - ▶ Ensure standard vessel, location, and commodity codes are used in data integration



Integrating the IRS Terminal Database

IRS_TCN_ID ▾	NAV_UNIT_ID ▾	ALIAS_NAME ▾	CITY_OR_TOWN ▾	ZIPCODE ▾	STATE ▾	LATITUDE ▾	LONGITUDE ▾
2243405	0Q1D	INTERNATIONAL MATEX, ST. ROSE TERMINALS	St Rose		LA	29.93806	-90.32583
2243219	0Q1G	INTERNATIONAL-MATEX TANK TERMINALS LTD GREYNA DOCKS	Harvey, LA	70058	LA	29.91667	-90.07111
2243527	0Q1V	CHALMETTE REFINING LLC	Chalmette	70043	LA	29.92806	-89.97167
2243404	0Q27	PHILLIPS 66 CO., ALLIANCE REFINERY	Belle Chasse	70037	LA	29.68	-89.96694
2243482	0Q2M	CITGO PETROLEUM CORP REFINERY WHARVES	Westlake	70669	LA	30.17917	-93.31722
2243395	0Q3S	HESS CORP., MONEY POINT WHARVES	Chesapeake	23324	VA	36.78472	-76.30278
2243479	0Q3S	HESS CORP., MONEY POINT WHARVES	Chesapeake	23324	VA	36.78472	-76.30278
2243392	0Q3X	PETROLEUM FUEL & TERMINAL CO BALTIMORE DOCKS	Baltimore	21224	MD	39.27306	-76.57222
2243521	0Q3X	PETROLEUM FUEL & TERMINAL CO BALTIMORE DOCKS	Baltimore	21224	MD	39.27306	-76.57222
2243332	0Q42	CHEVRON PRODUCTS CO, PASCAGOULA REFINERY	Pascagoula	39581-3201	MS	30.34278	-88.5075
2243439	0Q54	WESTERN REFINING, YORKTOWN REFINERY WHARVES	Yorktown		VA	37.22528	-76.43889
2243453	0Q5S	VOPAK TERMINAL WILMINGTON	Wilmington	28401	NC	34.21111	-77.95583
2243454	0Q5Y	COMMODORE'S POINT TERMINAL WHARF	Jacksonville	32226	FL	30.322775	-81.628745
2243320	0Q61	AMERADA HESS CORP PENNSAUKEN DOCKS 1 - 6	Pennsauken	8110	PA	39.9775	-75.06778
2243477	0Q6C	PREMCO INC., DELAWARE CITY, DE.	Delaware City	19706	DE	39.58528	-75.5925
2243470	0Q6E	SUN REFINING AND MARKETING MARCUS HOOK WHARF	Marcus Hook	19061	PA	39.811863	-75.414112
2243381	0Q6T	VALERO TERMINAL	Paulsboro	8666	NJ	39.84611	-75.26528
2243201	0Q6W	SUNOCO INC.	Philadelphia		PA	39.87861	-75.15639



Reconciling USACE & USCG Vessel Inventories

	A	B	C	D	E	F	G	H	I	J	K	L	M	N
	REMARKS	VESSEL	NRT	VESS_NAME	VESS_NUMBER	VESSSEL_NAME	CG_NUMBER	OFFICIAL_NUM	OPERATOR	OWNER	LAST_OPER	TS_OPERATOR	REG_LENGTH	O
2	IMO # IN CG_NUMBER	52068	11618	SEA-LAND DEFENDER	0	MSC DAMLA	7820966	604246		1100000	1315724	1101989	806.6	
3	O.N. TYPO (1-DIGIT)	62038	130	PACIFIC EMPIRE	0	PACIFIC STAR	566510	556510	3800000		0	3803043	175	
4	O.N. TYPO (1-DIGIT)	60464	192	MARSEA FIVE	0	JAGUAR	629251	629259	900000		70354	902187	166	
5	O.N. TYPO (TRANPOSE 2 DIGITS)	68327	120	MR. CLEAN II	0	CLEAN ISLANDS	645590	645950	4100000		0	4103041	125	
6	O.N. TYPO (1-DIGIT)	59965	63	PBR	163	CAPITOL VENTURE	643737	643732	1500000			1502748	98.9	
7	O.N. TYPO (TRANPOSE 2 DIGITS)	72220	62	LOUISE G	0	C-CONDO	658394	568394	3201168	3201168	1601092	3205338	90.6	
8	O.N. TYPO (1-DIGIT)	62846	67	THUNDERPLANET	0	KAMERON RENEE	645835	645836	3200000			3205118	110	
9	O.N. TYPO (1-DIGIT)	55030	66	BALTIMORE PATRIOT II	0	MISS CHRISTIN	281867	281864	967113		967113	952503	64.5	
10	O.N. TYPO (1-DIGIT)	52511	17	REGGIE B	0	BARON	228368	288368	700000				471	
11	O.N. TYPO (1-DIGIT)	3556	64	MOBY JIM	0	CAPT JOHNNY	299619	299649		1500000		1504556	59.5	
12	O.N. TYPO (1-DIGIT)	15460	36	BAYOU LADY	0	CAPT SUARD	587358	507358	3201024	3200000	3201024	3205538	48	
13	O.N. TYPO (1-DIGIT)	6321	134	DELTA DEANNA	0	EAGLE	929238	928238		1500000		3901848	92	
14	O.N. TYPO (TRANPOSE 2 DIGITS)	42641	70	MISS MARCIA	0	EVA BISSO	594301	594031	3200957	3200000	3200957	3202057	64.5	
15	O.N. CORRECTED; NAME CHANGE ONLY	71446	73	TONY	0	RICKY J LEBOEUF	289759	289759	3300000				0	
16	O.N. TYPO (1-DIGIT)	1534	35	KATANNI	0	ROCHELLE KAYE	290988	290983	2300366		2300366	2301038	51.5	
17	O.N. ERROR (SHIFT DIGITS)	62948	50	MR. ALEX	0	MS D	283125	628312		3200000		3200805	47.2	
18	O.N. ERROR (WRONG SHIP O.N., CONFUSED BY NAME)	34167		SEA HUNTER	0	ROOKIE	692635	692625		100000		100090	65	
19	O.N. CROSSED WITH OTHER SHIP	62138	6588	SANTA ADELA	0	SANTA ADELA	502726	504015	300000		0	301698	521.2	
20	O.N. CROSSED WITH OTHER SHIP	62139	6588	SANTA JUANA	0	SANTA JUANA	504015	502726	300000		0	301698	521.2	
21	O.N. CROSSED WITH OTHER SHIP	34338	55	CAPT. JIM	0	CAPT. JIM	586018	581773		3200000	3201397	3205847		
22	O.N. CROSSED WITH OTHER SHIP	61484	55	CAPT. KEITH	0	CAPT. KEITH	581773	586018		3200000	3201397	3205847		
23	O.N. TYPO (1-DIGIT)	54682	445	ATLANTIC BEACH	0	ATLANTIC BEACH	552679	562679		3300000		3301113	176.2	
24	O.N. TYPO (1-DIGIT)	66889	615	ATLANTIC SHORE	0	ATLANTIC SHORE	555062	552062	1264027				0	
25	O.N. TYPO (1-DIGIT)	9578	12	PRIORITY TOO	0	PRIORITY TOO	589511	589551		100000		106893	35.1	



River Information Services

Waterway (Voyage Planning)

Vessel Traffic (Voyage Management)

Transportation Logistics

Support Services

Strategic Traffic

Miscellaneous

River Information Services (RIS) is the exchange of information, in advance and real-time, needed to make inland waterway transport safe, secure and reliable.



River Information Services

Aids To Navigation (ATON)

Lock Closures

Lock Characteristics

Lock Queue Data

Lock Status

Inland Electronic Nav Charts

Safety Zones

Dredging Contracts

Water Level

Weather Forecasts

Notices to Navigation/Mariners

Vessel Location

Historical Data

Real Time Current Velocities

Current Ice Conditions

Master Docks +

Commodities

Vessel Characteristics

Federal Agency Jurisdictions

Federal Reporting Requirements

Regulations

Interactive Portal

Mariner Licensing

Vessel Documentation

Historic Data



River Information Services

Aids To Navigation (ATON)

Lock Closures

Lock Characteristics

Lock Queue Data

Lock Status

Inland Electronic Nav Charts

Safety Zones

Dredging Contracts

Water Level

Weather Forecasts

Notices to Navigation/Mariners

Vessel Location

Historical Data

Real Time Current Velocities

Current Ice Conditions

Master Docks &

Commodities

Vessel Characteristics

Federal Agency Jurisdictions

Federal Reporting Requirements

Regulations

Interactive Portal

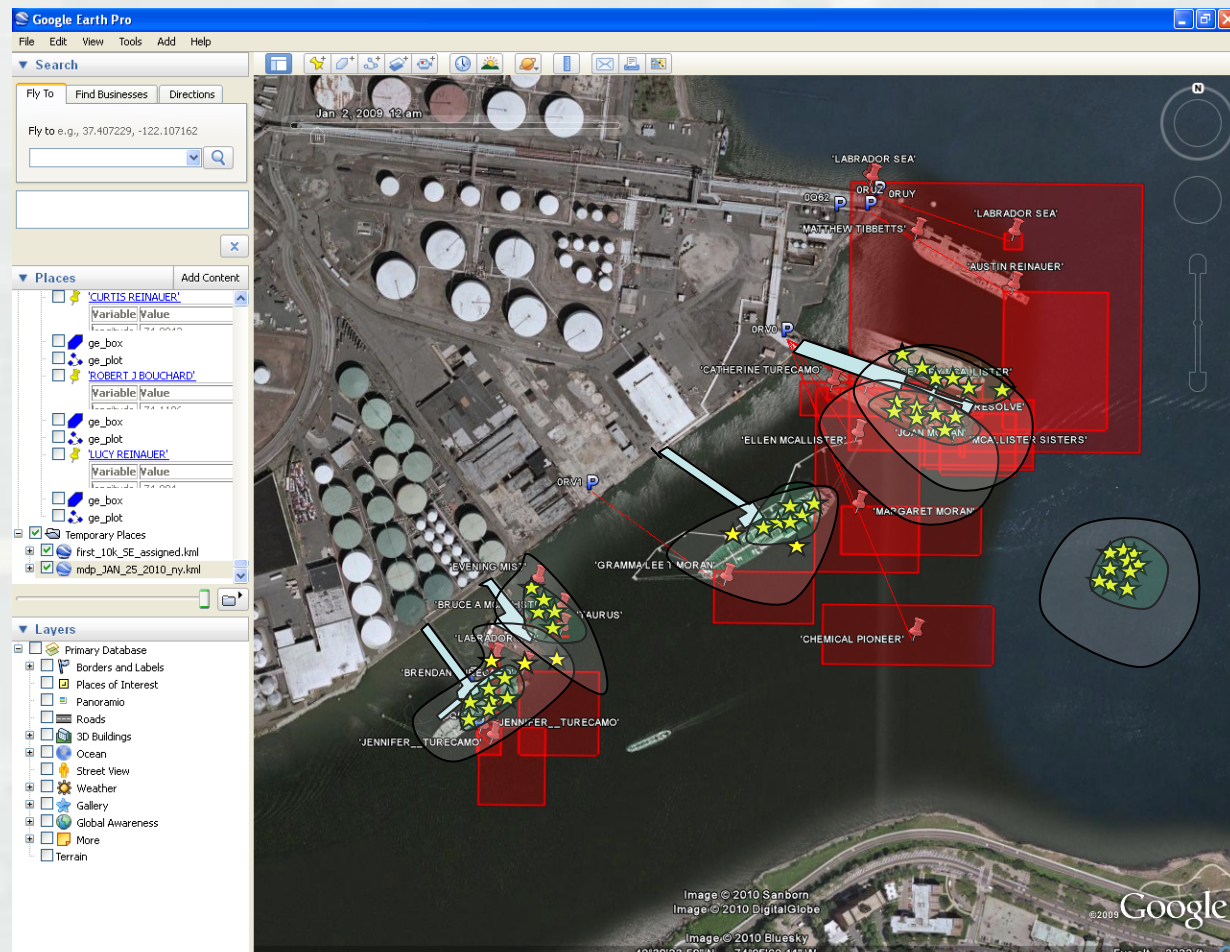
Mariner Licensing

Vessel Documentation

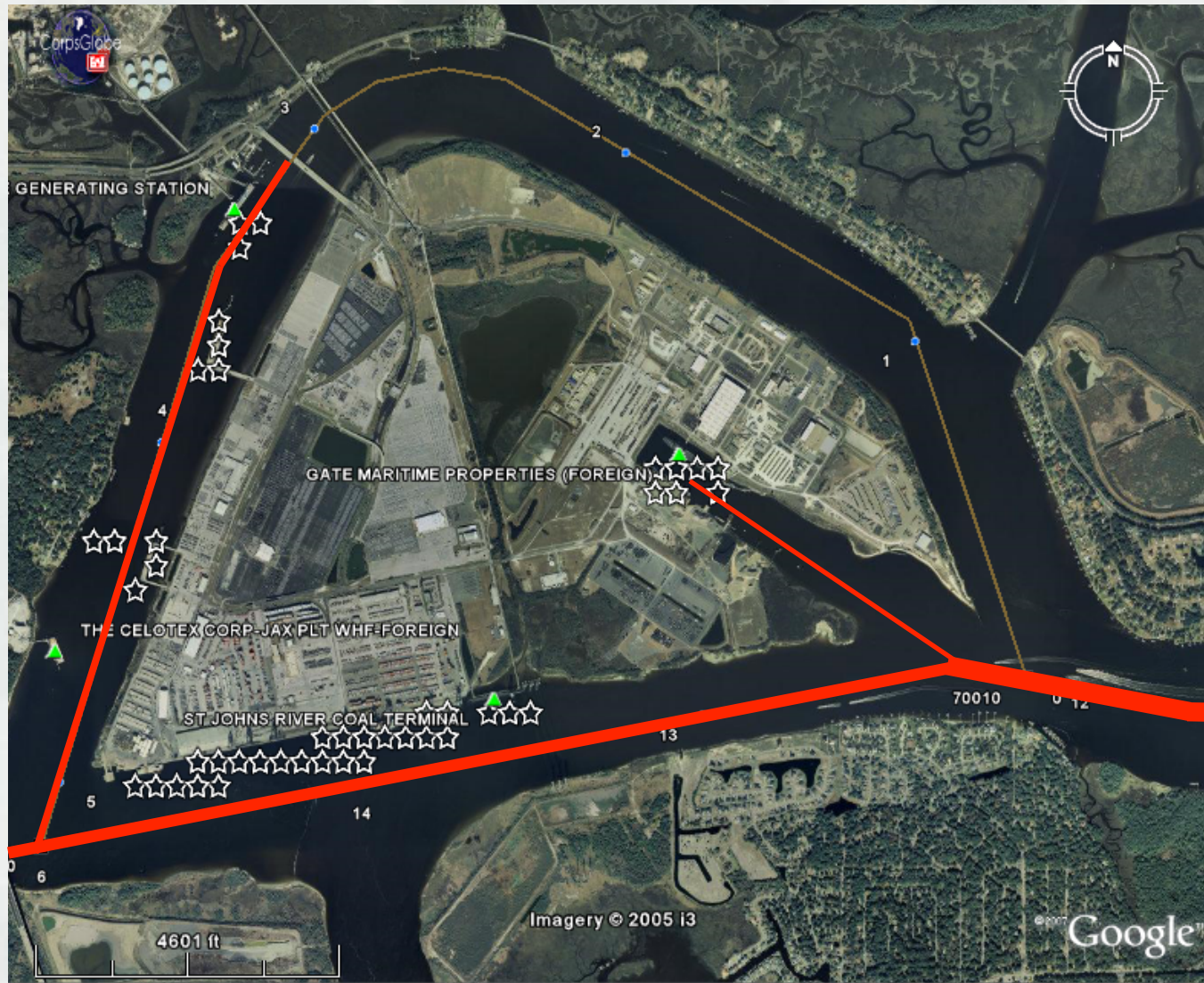
Historic Data



Fusing AIS and Other Data Sources for Better Quality & Information



Validating Waterway Links and Link Use



Identifying & Cataloging Navigation Points of Interest



Cross-Checking and Correcting Data

