

SMALL BOAT HARBOR PLANNING SUB-CENTER OF EXPERTISE (SBH-PSCX)

Cindy Upah
Chief of Planning
Alaska District, Pacific Ocean Division

Eric Johnson
Economist
Alaska District, Pacific Ocean Division

Date: 25 June 2020



US Army Corps
of Engineers®





TOPICS



- History / Mission
- Roles & Responsibilities with DDNPCX
- Organizational Structure
- What is a Small Boat Harbor?
- Examples of Small Boats
- Similarities and Differences between SBH and DDN
- Contacting the SBH PSCX





PLEASE TELL US YOUR DISCIPLINE!

☐

Planning

☐

Environmental

☐

Other (please specify below)

☐

H&H

☐

Econ

☐

Cost

☐

Cultural

☐

Geotech

☐

PM

☐

Legal / OC

☐

Real Estate



HAVE YOU WORKED WITH THE SMALL BOAT HARBOR PSCX BEFORE?

Not at all

Minimally

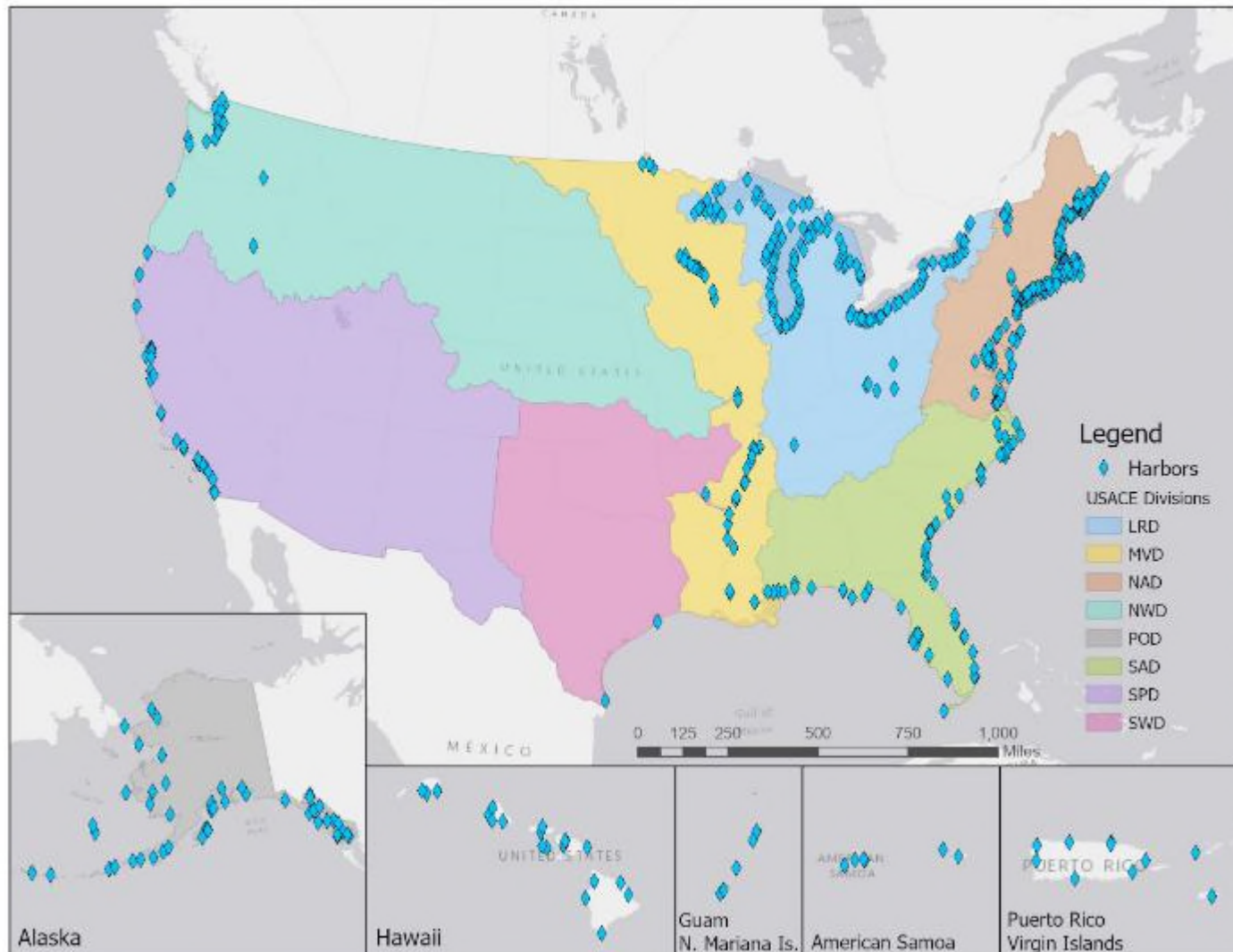
Yes



HISTORY SMALL BOAT HARBOR PSCX

- PCXs Established in 2003 and Codified in WRDA 2007
 - South Atlantic Division (SAD) identified as home for Deep Draft Navigation
 - Designated DDNPCX (no distinction for SBH yet)
- CECW-CP MEMORANDUM, Subject: Planning Centers of Expertise – Mission Roles and Responsibilities Statements and Small Boat Harbor Designation, 23 June 2008
 - Designated POD as PSCX for SBH
 - Function collaboratively and for management purposes as a sub-unit of DDNPCX
 - Recognized SBH technical analyses generally not found in IN or DDN planning analyses
- OPORD 2012-15 signed 24 Feb 2012
 - Mandatory that DDNPCX performs economic analyses for DDN & SBH studies
 - Responsibility is with PCX/PSCX – Coordinate with Districts to determine economic assignment

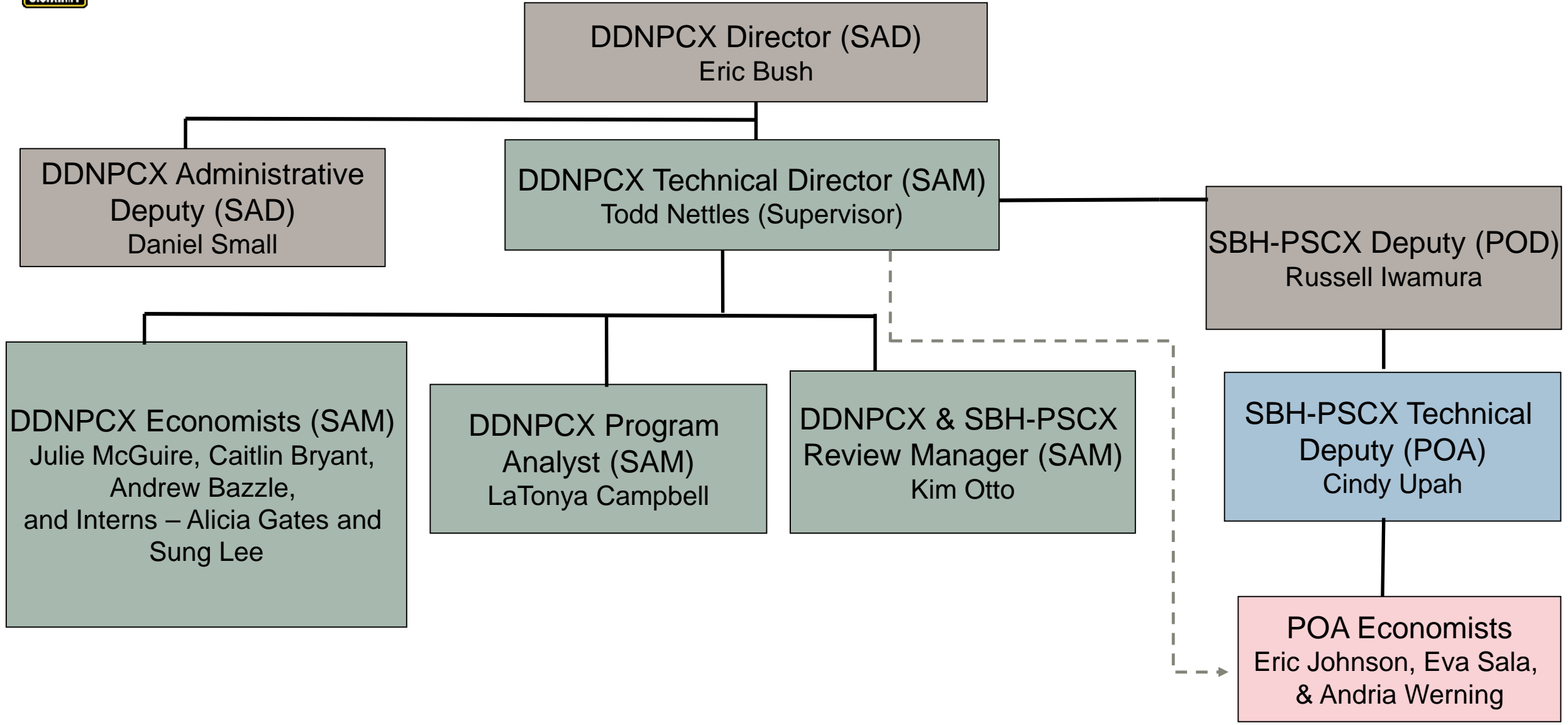
SMALL BOAT HARBORS



- Existing harbors
- SBH Studies
 - 2 GI
 - 13 CAP Section 107



ORGANIZATIONAL STRUCTURE





ROLES AND RESPONSIBILITIES WITH DDNPCX



Type of Study	Existing or Improved Channel Depth	Study Purpose	Economic Production (identifies production economist)	Review Management Organization (for study)	Econ DQC (identifies DQC economist)	Econ ATR (identifies ATR economist)
Continuing Authorities Program Section 107 Studies	>14 feet in depth (deep draft)	Deep Draft only	DDNPCX	MSC	DDNPCX	DDNPCX
		Small Boat Harbor only	DDNPCX in coordination with SBH-PSCX	MSC	DDNPCX in coordination with SBH-PSCX	DDNPCX in coordination with SBH-PSCX
		Deep Draft and Small Boat Harbor	DDNPCX in coordination with SBH-PSCX	MSC	DDNPCX in coordination with SBH-PSCX	DDNPCX in coordination with SBH-PSCX
	< or = 14 feet in depth (shallow draft)	Shallow Draft only	District in Coordination with SBH-PSCX	MSC	DDNPCX in coordination with SBH-PSCX & District	DDNPCX in coordination with SBH-PSCX & District
		Small Boat Harbor only	District in Coordination with SBH-PSCX	MSC	DDNPCX in coordination with SBH-PSCX & District	DDNPCX in coordination with SBH-PSCX & District
		Shallow Draft and Small Boat Harbor	District in Coordination with SBH-PSCX	MSC	DDNPCX in coordination with SBH-PSCX & District	DDNPCX in coordination with SBH-PSCX & District
Small Boat Harbor Studies that are not CAP (GI, PACR, Pre-Authorization)	>14 feet in depth (deep draft)	Small Boat Harbor only	DDNPCX in Coordination with SBH-PSCX	DDNPCX	DDNPCX in coordination with SBH-PSCX	DDNPCX in coordination with SBH-PSCX
	< or = 14 feet in depth (shallow draft)	Small Boat Harbor only	DDNPCX in Coordination with SBH-PSCX	DDNPCX	DDNPCX in coordination with SBH-PSCX	DDNPCX in coordination with SBH-PSCX



SBH PSCX MISSION / PURPOSE



The SBH-PSCX (in coordination with the DDNPCX) prepares SBH navigation products including: economic analyses for studies, periodic economic analysis updates to support budgeting for design and construction activities, and economic analyses to support effective operations and maintenance decisions and budgets.

Common to All PCXs:

- Technical Services
- Peer Review
- Research and Development
- Training
- Planning Model Certification
- Policy Development Support
- Process Improvement
- Lessons Learned

Other Services:

- Senior Planning
- Planning Associates Program - SBH Course Owner
- PCX Guild
- Planning CoP Workforce Development Committee



WHAT LEVEL OF EXPERIENCE DO YOU HAVE WITH SMALL BOAT HARBORS?

Little or none

Moderate

Extensive



WHY ENGAGE THE SBH PSCX ON A STUDY?



Place a ✓ by what's different about a SBH study

HarborSym

Commercial Fishing

Container Ships

Data Gathering Surveys

Hinterlands

Marine Resource Assessment

Water Taxi

Recreational Vessels

NED Benefits

Subsistence Vessels

Panamax

Other Social Effects

Worksheet

Vessel Operating Cost Database

WHAT IS A SMALL BOAT HARBOR?

Think of SBH as multi-purpose harbors

Generally depth ≤ 14 feet (shallow draft)

- There are plenty of “small boats” that draft more
- Ocean going fuel barges can draft >20 feet

Shelter for “Small Boats” including:

- Commercial Activities
 - Fishing (commercial and charter)
 - Transportation (people and cargo)
 - Tourism
- Subsistence Activities (fishing, hunting, & gathering)
- Recreation (day vessels, cruise ships)
- Government (USCG, research)



“Small boats” e.g. commercial fishing



Versus deep draft navigation



EXAMPLES OF “SMALL BOATS”





SMALL BOAT HARBORS COME IN ALL SIZES



Marina Del Rey, CA
5,300 boats
~600 acres



'Au'asi, Tutuila Island,
American Samoa
~1.7 acres



Laupāhoehoe,
Big Island, HI
~0.5 acres



Nome, AK



Yaquina River, OR



Cattaraugus Creek, NY



Homer, AK

THINGS TO THINK ABOUT...

- How are the economic analyses for small boat harbors similar to the economic analyses for deep draft harbors?
- How are they different?



Crescent Harbor in Sitka, Alaska



SIMILARITIES AND DIFFERENCES BETWEEN SBH AND DDN



Similarities

- 6-Step Planning Process
- Conceptual Basis for Benefits
- Without Project Conditions Definition
- With Project Conditions Definition
- Basic Economic Criteria for Plan Formulation/Selection/Optimization
- Basic Steps of Evaluation Process
- General Economic Principles
- Notable Economic Evaluation Considerations
- National Economic Development (NED) cost considerations

Differences

- Users of DDN and SBH
 - Commercial fishing, tour-related, water taxis, recreational, and subsistence
- Problems and Opportunities
 - Basic problem: inefficiencies exist
 - Manifestation of inefficiencies is different
- Availability of pre-collected data
 - Lack of readily available data
 - Greater need for surveys
- May require additional analyses
 - Marine Resource Assessment
 - Subsistence considerations

TRANSPORTATION INEFFICIENCIES – MANIFESTED DIFFERENTLY



Inefficiencies, vessel and infrastructure damages



POLICY AND GUIDANCE



- Economic and Environmental Principles and Guidelines for Water and Related Land Resources Implementation Studies, March 10, 1983 (a.k.a. “The P&G”)
- Planning Guidance Notebook ER1105-2-100 Appendix D and E
 - Commercial Fishing (Para E-11)
 - Small Boat Harbors (Para E-12)
 - Opportunity Cost of Time (Para D-4.f.)
 - OMB-approved Surveys (Para D-4.e.)
 - Recreational Benefits (Para E-8.b.(5))
- Policy Considerations in SBH Planning
 - Multi-purpose, mixed use harbors
 - Remote & Subsistence harbors
 - Commercial fishing and subsistence benefits
 - Recreation benefits



COLLECTING ECONOMIC DATA



Problem: Lack of readily available detailed data

Methodology

- Interviews
- Surveys
- Focus Groups
- Published Data

Sources

- Primary
- Secondary



SOURCES OF DATA

Primary Sources

- Public meetings
- Fish processors
- Fishers
- Harbormasters
- Boat repair shops
- State/Federal Fisheries Managers
- Fishermen Unions
- Insurance Agencies
- State Department of Labor
- Universities

Secondary Sources

- Websites
- Trade Magazines
- Special Studies





ECONOMIC EVALUATION: SBH VS. DDN



NED Benefits

- Transportation cost savings (commercial & subsistence)
- Opportunity cost of time (commercial fishing & subsistence)
- Increased commercial and subsistence harvest (replacement vs. production cost method)
- Reduced damages to infrastructure (e.g. floats)
- Recreation opportunities (if applicable)

Model

- HarborSym vs. spreadsheet model
- CAP vs. GI
- Model development and review

Engage your PCX – we're here to help!



Holland America Cruise Ship in Glacier Bay National Park



ECONOMIC EVALUATION: OTHER ACCOUNTS



Other Social Effects

Regional Economic Development

Environmental Quality

ASA(CW) directive on comprehensive documentation of benefits



Construction Barge in Elim, Alaska



ECONOMICS: KEY TAKE-AWAYS

- In general, the problems we address in multi-purpose “small boat” harbors are similar to the problems we address in deep draft harbors
- The harbor operations that cause the problems can be different
- The benefits used to justify small boat harbor projects are similar to the benefits used to justify deep draft navigation projects
- Different methods must be used to gather some of the data
- There are some benefit categories specific to small boat harbors (e.g. commercial fishing and subsistence harvests, recreation)
- Engage your friendly neighborhood PCX



WHY TO ENGAGE SBH PSCX ON A STUDY?

Place a ✓ by what's different about a SBH study

HarborSym

Commercial Fishing

Container Ships

Data Gathering Surveys

Hinterlands

Marine Resource Assessment

Water Taxi

Recreational Vessels

NED Benefits

Subsistence Vessels

Panamax

Other Social Effects

Worksheet

Vessel Operating Cost Database



CONTACTS



Russell Iwamura
Chief, Planning, Pacific Ocean Division
Russell.K.Iwamura@usace.army.mil
(808) 835-4625

Jason Norris, WRCP
Senior Economist, Pacific Ocean Division
Jason.M.Norris@usace.army.mil
304-942-7041

Cindy Upah
Chief, Planning, Alaska District
Cynthia.S.Upah@usace.army.mil
(907) 753-5788

QUESTIONS?



US Army Corps
of Engineers®