

PLANNING ASSISTANCE TO STATES

SECTION 22

PROGRAM OVERVIEW

Sharon Sartor
Program Manager
25 February 2021

"The views, opinions and findings contained in this report are those of the authors(s) and should not be construed as an official Department of the Army position, policy or decision, unless so designated by other official documentation."



US Army Corps
of Engineers®



WEBINAR OVERVIEW

- Planning Assistance to States background
- Getting Started
- Program Opportunities
- Project Examples:
 - NAB – Muncy FRM Study
 - LRN – Metro Nashville Flood Preparedness
 - MVP – St. Croix Chippewa Embankment Study
 - SWG – Lower Clear Creek Comprehensive Study
 - SPL – Tijuana River Watershed Sediment Study
- Questions and Discussion



PRIOR PAS EXPERIENCE?

Not much

Some

Manage PAS
Projects

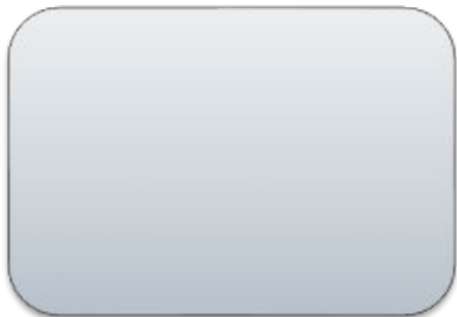
File Name



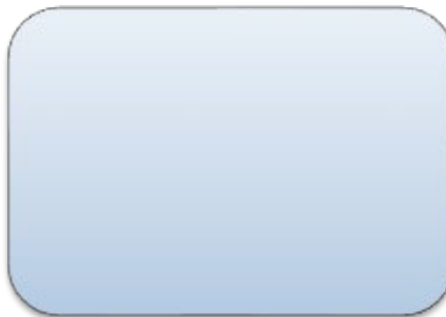
US Army Corps
of Engineers ®



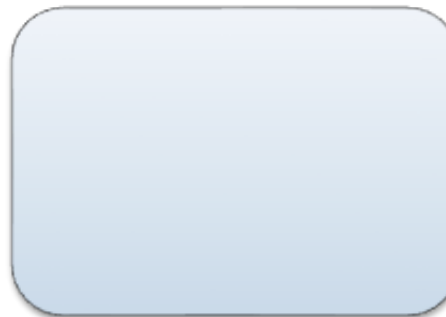
WHAT TYPES OF PROJECTS CAN BE DONE?



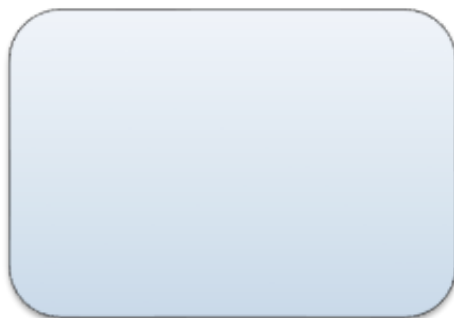
Flood Risk Mgmt



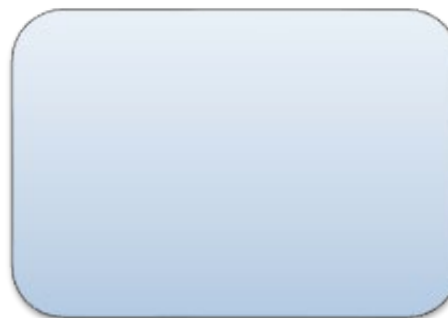
Environmental
Studies



Comprehensive
Watershed Planning



Water Supply



Everything listed &
more!



PLANNING ASSISTANCE TO STATES (PAS)

Authority – Section 22, WRDA 1974, as amended

Purpose – Make USACE expertise available for efforts pertaining to planning for water and related resources.

Planning Assistance to States (PAS). Section 22 of WRDA 1974, as amended, (42 U.S.C. 1962d-16) authorizes two types of studies: comprehensive plans and technical assistance. USACE is authorized to cooperate with **any state, a group of two or more states, or non-Federal interest working with a state in the preparation of comprehensive plans for the development, utilization, and conservation of the water and related resources of drainage basins, watersheds, or ecosystems, including plans to comprehensively address water resources challenges** located within or across the boundaries of such state(s) and to submit to Congress reports and recommendations with respect to appropriate Federal participation in carrying out such plans.

At the request of a governmental agency or non-Federal interest, the Secretary may provide technical assistance to such governmental agency or non-Federal interest in managing water resources.

Section 156, WRDA 2020. In carrying out section 22 of WRDA 1974 (42 U.S.C. 1962d-16), the Secretary shall provide **equal priority for all mission areas of the Corps of Engineers, including water supply and water conservation.**



WHO CAN PARTICIPATE

- A state;
- Group of states;
- Non-federal public bodies;
- Federally-recognized Indian Tribes; *
- Specified territories; *
 - Indian tribes, Puerto Rico, Virgin Islands, Guam, American Samoa, Northern Mariana Islands
- Not for profits
 - The not for profit entity must provide a letter from the affected local government consenting to the provision of such Section 22 assistance to the nonprofit entity

* Cost share Waiver for tribes and territories

- Up to \$484,000 (Amounts over \$484,000 subject to 50%/50% cost share)



US Army Corps
of Engineers ®



TYPES OF AGREEMENTS

Comprehensive Water Resources Planning

- Planning for the development, utilization, and conservation of the water and related resources of drainage basins, watersheds, or ecosystems, including plans to comprehensively address water resources challenges such as the state water plan.
- Typical water resources problems and opportunities included in comprehensive state water resource planning efforts include: flood risk management, water supply, water conservation, environmental restoration, water quality, hydropower, erosion, navigation, fish and wildlife, cultural resources, and environmental resources.
- Cost-share: 50% federal/50% non-federal
 - Non-federal voluntary contributions in excess of cost-share requirement
 - Non-federal share may include in-kind services for Comprehensive Plans

Technical Assistance

- Technical work related to management of state water resources in support of a water resources management plan, related land resources development plan or other water resources management related planning documents.
- Coastal assessments for natural and nature-based infrastructure, stream and wetland assessments, sewer and stormwater infrastructure inventories and databases, coast-shed and watershed planning, flood risk assessments, GIS mapping, water supply demands, etc.
- Cost-share: 50% federal/50% non-federal
 - Non-federal voluntary contributions in excess of cost-share requirement
 - In-Kind Services not permitted for Technical Assistance



GETTING STARTED

Scope of Work

- District and partner develop scope of work for project
- Identify tasks, deliverables, cost, and schedule
- Identify cost-share requirements and work in kind (Comprehensive Plan only)
- MSC review and approval prior to executing agreement

Letter of Agreement

- District Commander and non-federal partners sign a Letter of Agreement
- Template Agreements:

http://www.usace.army.mil/Missions/Civil-Works/Project-Partnership-Agreements/templates_pas/

Funding

- MSC works with HQ on availability of funds during their approval of the scope
- Funds are provided with an executed agreement



GETTING STARTED

Key Considerations

- No site-specific structural designs
- No construction specifications
- Implementation is the responsibility of the non-federal public body
- Annual program limit of \$5M per state, tribe or territory
- Projects can be started on a rolling basis
 - “First come, first served”



US Army Corps
of Engineers ®



INCREASING PAS BUDGET



FY21 BUDGET

- FY21 PresBud = \$5M (FRM only)
- FY21 Workplan = \$8,726,000
- Total = \$13,726,000

FY21 Appropriations Bill:

“The Corps is reminded that this program encompasses many types of studies and technical assistance dealing with a number of water resource issues, including but not limited to, sediment management, state water planning, water distribution, and water supply evaluations.

Vulnerable Coastal Communities. The Corps is encouraged to continue building capacity to provide this assistance to vulnerable coastal communities, including tribal communities.”



OPPORTUNITIES!

- FY21 Funding available for new PAS projects
 - PAS Negotiation funds
- Agreements can be executed at any time
 - “First come, first served”
- Resources:
 - ER 1105-2-100: Planning Guidance Notebook, Appendix G
 - http://www.usace.army.mil/Missions/Civil-Works/Project-Partnership-Agreements/templates_pas/
- Example District PAS websites:
 - <https://www.nab.usace.army.mil/technical-services/>
 - <https://www.mvp.usace.army.mil/Home/Projects/Article/692906/planning-assistance-to-states-program/>

PAS PROJECT EXAMPLES



NAB - MUNCY FLOOD RISK MANAGEMENT STUDY

14



Agreement Type – Comprehensive

Partners: Lycoming County, PA; Muncy Bank and Trust; Susquehanna River Basin Commission

Project Description: Muncy Borough requested assistance to support their initiative to become a Resilient City and address flooding issues. The benefits of this study will be a more resilient community, with a plan to reduce impacts from flooding. Project is estimated to take 2-3 years for completion.

Objectives:

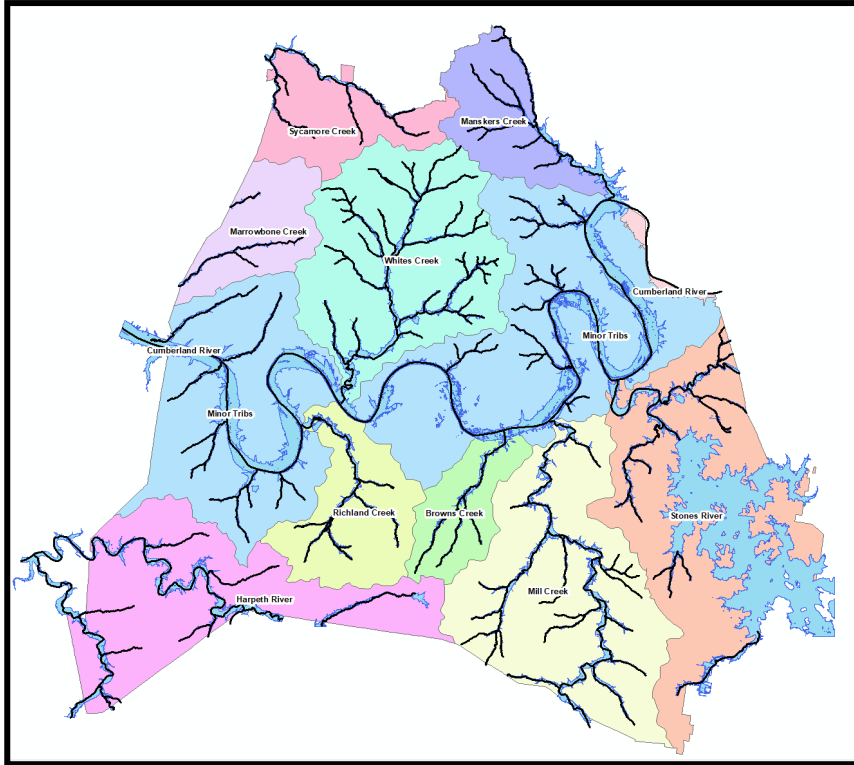
- Data collection
- Hydrologic and hydraulic modeling
- Stormwater modeling
- Develop alternatives to address riverine and stormwater flooding
- Economic analysis

Total project costs: \$337K

Tony Clark & Karl Kerr, Baltimore District

LRN - METRO NASHVILLE FLOOD PREPAREDNESS

15



Agreement Type – Technical Assistance (multiple)

Partners: Metro Nashville; supporting partners: NWS, USGS, FEMA, TN NFIP Coordinator

Project Description: Approximately 500 miles of streams modeled for Flood Insurance Study updates submitted to FEMA. With this modeling and Real-Time Simulations for 8 basins combined with USGS gages and NWS flood forecasts, Metro Nashville can utilize these flood preparedness products for emergency planning and response. These products can support smart planning for future development. Multiple projects since flooding in 2010 that range from 1-2 years to complete.

Objectives:

- Floodplain modeling and mapping
- HEC-RTS models – real-time inundation for forecasted rainfall
- Coordination with USGS on stream gages
- Coordination with NWS on improved forecast accuracy
- Flood preparedness tools

Total project costs: varies, current agreement \$760K

Lacey Thomason, Nashville District

MVP – ST. CROIX CHIPPEWA EMBANKMENT STUDY

16



Kim Warshaw & Sam Smith, St. Paul District

Agreement Type – Comprehensive

Partners: St. Croix Chippewa Indians of Wisconsin, with support from St. Croix Environmental & Natural Resources Dept. and NRCS.

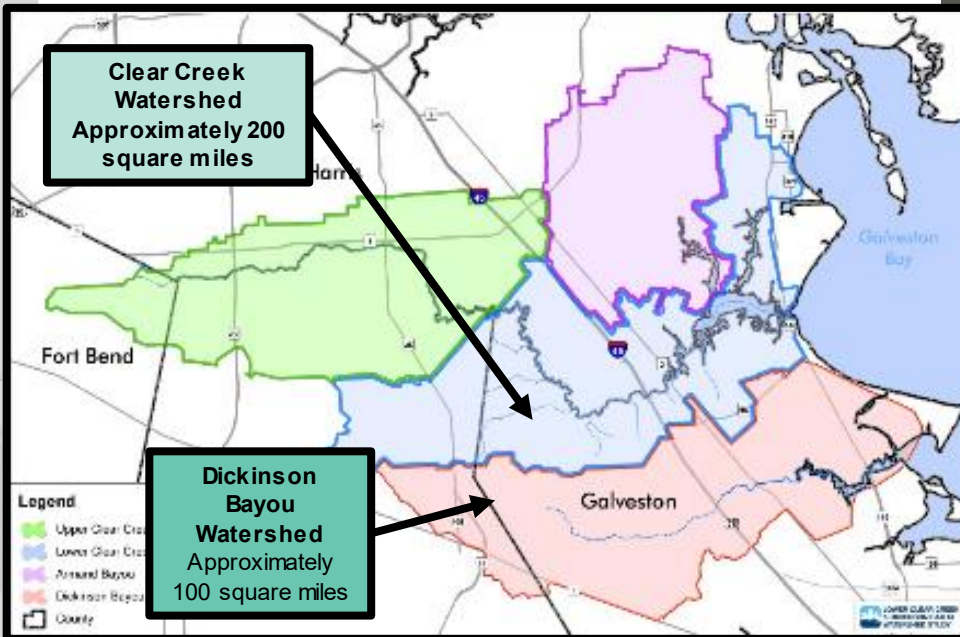
Project Description: This project supported the St. Croix Chippewa Indians of Wisconsin by providing information to inform decisions on future embankment replacement or removal projects. The comprehensive study assessed erosion, stability and safety of earthen dams within wetland complexes on tribal land. Project was completed in 17 months.

Objectives:

- Subsurface investigation, surveys, and breach analysis to assess implications of embankment failure at four earthen dams, as well as assessment of the need for the embankments.
- Provide data needed by the Tribe to justify future projects.

Total project costs: \$140,500 at full Federal expense (cost-share waiver for Tribes)

SWG - LOWER CLEAR CREEK & DICKINSON BAYOU



Agreement Type – Comprehensive

Partners: League City, TX with support from Harris County Flood Control District

Project Description: In August 2017, Hurricane Harvey struck the Texas coast, bringing an unprecedented amount of rainfall to the Houston region. The Clear Creek and Dickinson Bayou watersheds experienced widespread flooding, which resulted in significant damages. The goal is to develop a comprehensive dual watershed study to reduce flooding within and between the watersheds. Project scheduled for completion in Sept 2021, for a total of 13 months.

Objectives:

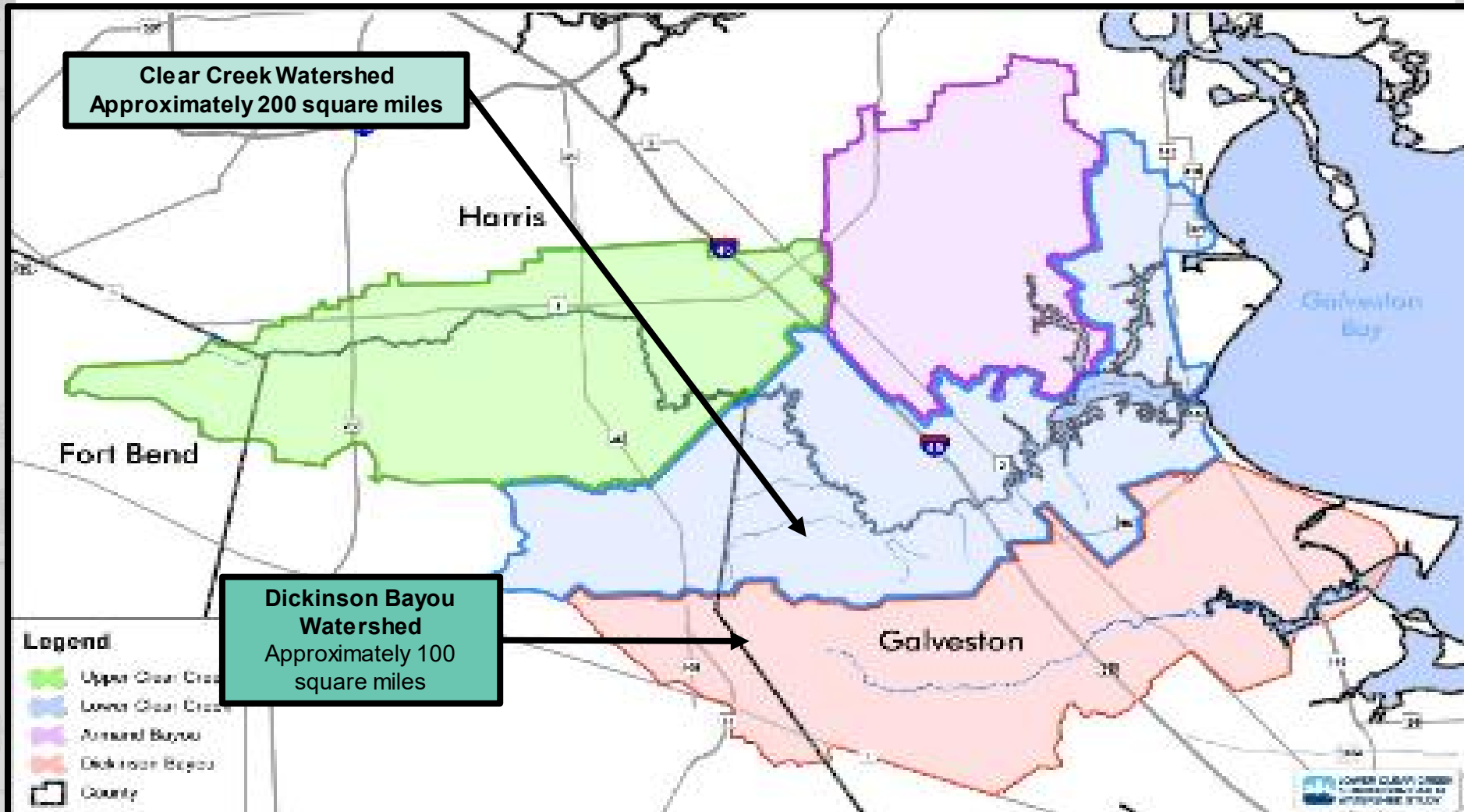
- Compound Flooding Analysis – interaction between rainfall-runoff and storm surge
- Sea Level Rise Analysis
- Geomorphic Investigation & Analysis for erosion and sedimentation
- Flood Damage Assessments
- Alternative Scenario analysis to select flood risk mitigation project features

Total project costs: \$500K (\$250K WIK)

Reuben Trevino, Galveston District

SWG - LOWER CLEAR CREEK & DICKINSON BAYOU

18



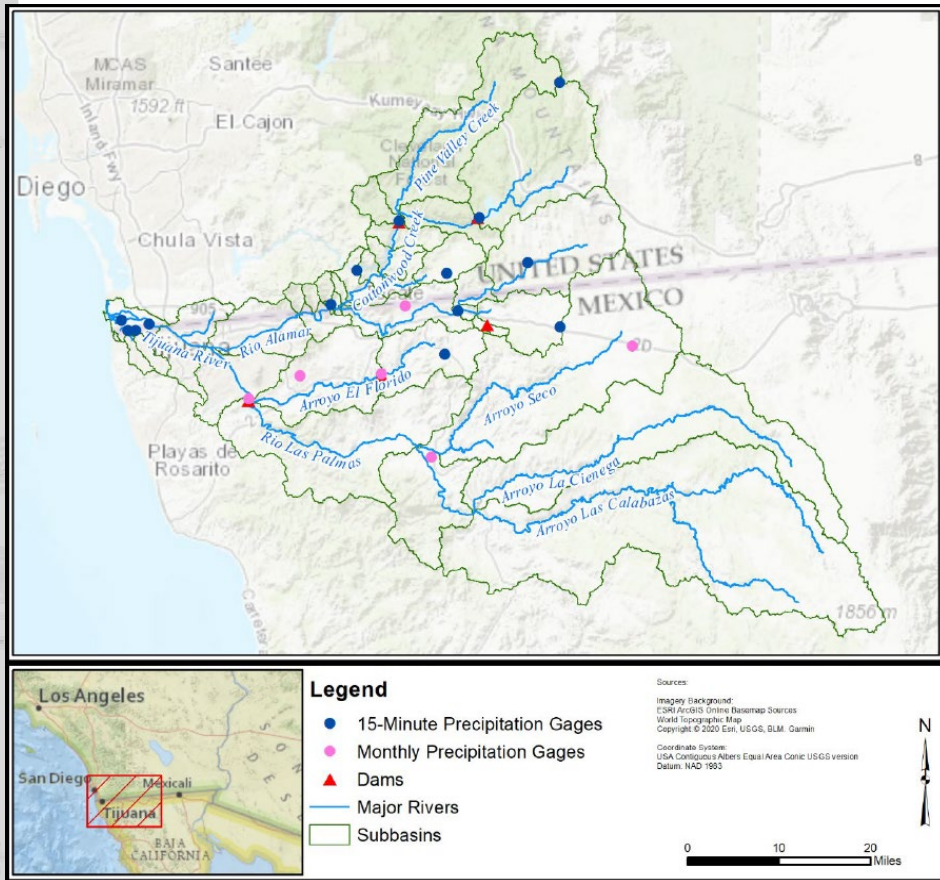
Reuben Trevino, Galveston District



US Army Corps
of Engineers®



SPL – TIJUANA RIVER WATERSHED SEDIMENT STUDY⁹



Agreement Type – Comprehensive

Partner: City of San Diego

Project Description: The Tijuana River Watershed is a bi-national watershed that spans across the U.S. and Mexico. This PAS study focuses on sediment transport and debris flow. Results of the study provided a platform to launch a larger study to further understand flow patterns in the watershed. Project conducted in two phases over approximately 5 years.

Objectives:

- Sediment Transport Model to show sediment and debris flow patterns in Tijuana River Valley.
- Expanded model – predictive tool for sediment and debris flow for future storm events

Total project costs: \$800K across two phases

SPL – TIJUANA RIVER WATERSHED SEDIMENT STUDY

PROJECT SITE PHOTOS

Facing SE
looking into
Mexico at
the border
less than 1
mi. from the
coast



Culvert system entering U.S.
from Mexico



Culvert
system
entering U.S.
from Mexico

QUESTIONS AND DISCUSSION

21

