

RIT 101

*A glimpse into the Regional
Integration Team (RIT)*

Steve Kopecky
Deputy Chief,
NWD/POD RIT

April 2024



US Army Corps
of Engineers®

U.S. ARMY



WHAT ROLE DO YOU PLAY IN FEASIBILITY STUDIES?

**District-level /
PDT member**

MSC-level

**Planning
Center of
Expertise (PCX)**

HQUSACE

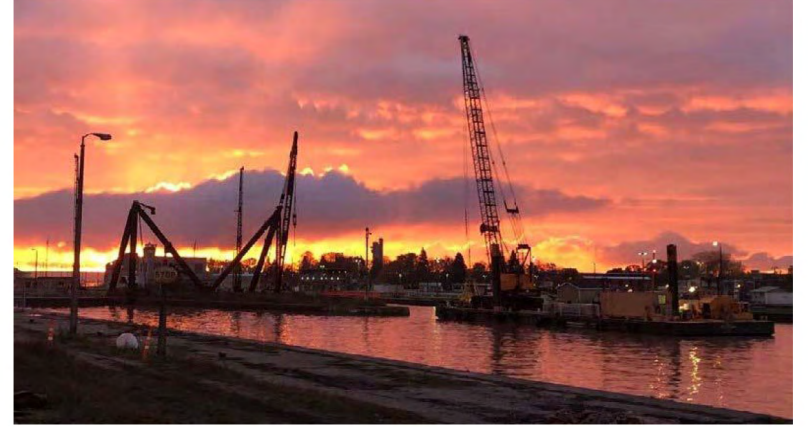
**Other support
as needed (i.e.
ERDC, HEC)**

Click on the Annotation option  in the top right-hand corner of your screen (to the left of the participant list if open) and then use the Pencil Tool or checkmark to mark your response.



HAVE YOU EVER WONDERED?

- Where do studies and projects come from?
- What happens to a study when its finished?
- Why am I working on this study?
- How are decisions made?
- What to do about policy issues?
- What happens when you run out of funding?
- Who can help when things go wrong?



ASK YOUR RIT!



WHICH ONE OF THE FOLLOWING STATEMENTS IS **FALSE?**

RIT Planners and RIT Programmers have distinct roles

RITs are only involved in the feasibility phase of a project

RITs can help PDTs navigate challenging policy issues

Each RIT is overseen by a Senior Executive at HQUSACE

Click on the Annotation option  in the top right-hand corner of your screen (to the left of the participant list if open) and then use the Pencil Tool or checkmark to mark your response.



WHICH ONE OF THE FOLLOWING STATEMENTS IS **FALSE?**

RIT Planners and RIT Programmers have distinct roles

RITs are only involved in the feasibility phase of a project

RITs can help PDTs navigate challenging policy issues

Each RIT is overseen by a Senior Executive at HQUSACE

Click on the Annotation option  in the top right-hand corner of your screen (to the left of the participant list if open) and then use the Pencil Tool or checkmark to mark your response.



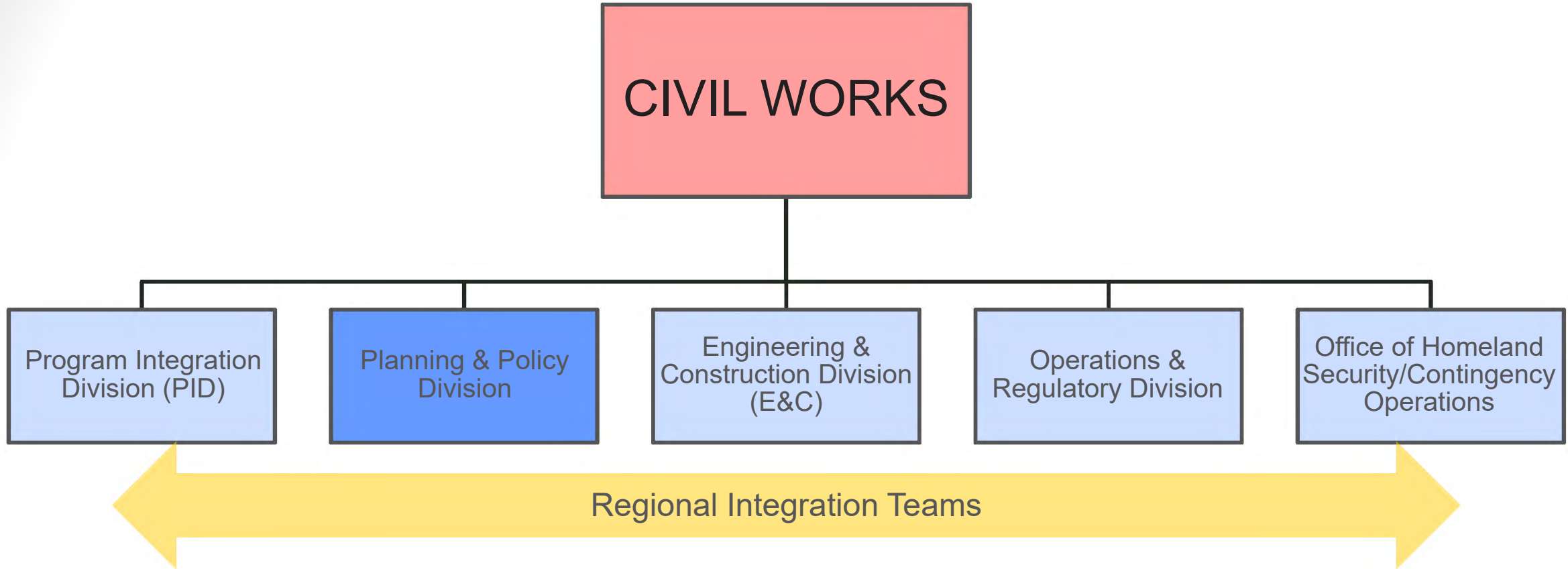
WHAT IS A RIT? – REGIONAL INTEGRATION TEAM

- Regional Integration Team – the Basics
 - One RIT per MSC
 - Joint HQ & MSC Structure
 - Cover all aspects of a project lifecycle
 - Cross functional team
 - Comprised of planners, programmers & others as necessary

- Established as part of USACE 2012 (developed in 2003)
 - USACE 2012 = Current HQ organization, with modifications
 - HQUSACE - Comprised of Functional Areas & RITs



HQUSACE – CIVIL WORKS ORGANIZATION STRUCTURE



- **RITs priority is to facilitate decisions, across all functional areas**
 - Includes: Budget, Planning, Policy, Legislation, etc...
- **Facilitate Program Execution across all programs**
 - Planning, Design, Construction, O/M & Emergency Mgmt.



DO YOU KNOW WHO YOUR RIT MEMBERS ARE?

**Nope! That's why I
called into this webinar.**



**I know OF them but
don't typically engage
with them.**

We're best buddies!

Click on the Annotation option  in the top right-hand corner of your screen (to the left of the participant list if open) and then use the Pencil Tool or checkmark to mark your response.

HQ REGIONAL INTEGRATION TEAM (RIT)

	SAD	SPD	MVD	SWD	LRD	NAD	NWD	POD
HQ SES RIT Champion	Pete Perez, SES Chief, Engineering & Construction		Eric Bush, SES Chief, Planning & Policy		Thomas Smith, SES Chief, Operations & Regulatory		Stephen Hill, SES Chief, Homeland Security	
RIT Deputy	Susan Lucas		Karla Roberts		Ryan Fisher		Steve Kopecky	
Programmer	Doris Valentin- Meyer Ingrid Bon	Julia Harvey	Sharon Sartor	Rebecca Albert	Joseph Aldridge	Anastasiya Kononova	Regine Maier	Vacant
Planner	Sue Wilcox Ingrid Bon	Charles Wilson	Ian Swisher Bryan Taylor	Eddie Douglass	Karen Miller	Nate Richards	Dan Hughes	Rachel Wooten
Endowed Chair	Nicole Liette	Rachel Watson	Rachel Hawes	Tony Porter,	Kaitlyn McClain/Arun Heer		Ida Royer	



REGIONAL INTEGRATION TEAM

Roles and Responsibilities

- **Facilitate Decisions**
 - Facilitate decisions made at National-level (i.e. Budget, Planning, Policy, Legislation, etc...)
- **Full Civil Works Lifecycle – From an Idea to operations**
 - Planning studies
 - Construction agreements
 - Budget development and defense
 - Legislation coordination and implementation
 - Correspondence and inquiries

Great Lakes & Ohio River Div. & North Atlantic Div. RIT (CECW-LRD-NAD)	Northwestern Div. & Pacific Ocean Div. RIT (CECW-NWD/POD)
Mr. Ryan Fisher	Mr. Steven Kopecky
Mississippi Valley Div. & Southwestern Div. RIT (CECW-MVD-SWD)	South Atlantic Div. & South Pacific Div. RIT (CECW-SAD-SPD)
Ms. Karla Roberts	Ms. Susan Lucas

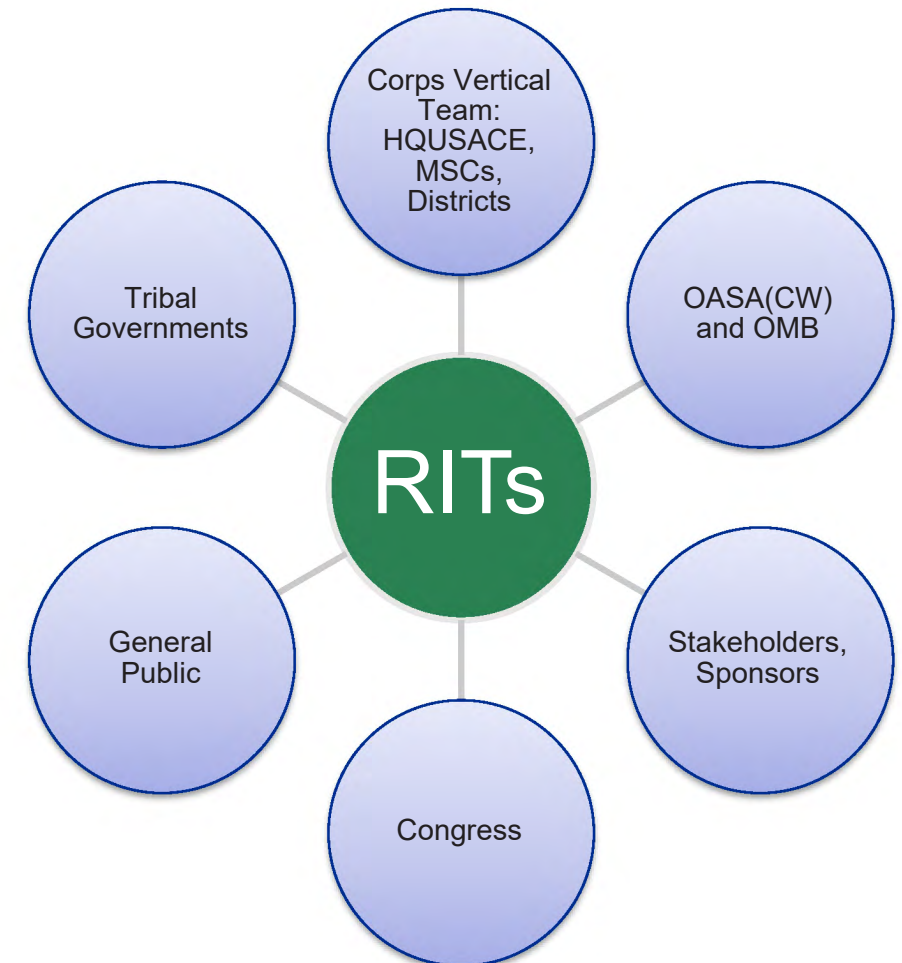


HOW WE OPERATE

- **Process & Procedure**
 - Planning studies & Reports
 - Partnership agreements
 - Budget development and defense
 - Legislation – technical assistance & effects statements
 - WRDA Guidance - coordination and implementation
 - Correspondence and inquiries
 - Chief’s Reports and Director’s Reports
 - Policy exceptions

- **Build Relationships, Relationships, Relationships.....**
 - Serve as liaisons between HQ/MSC/Districts
 - Advocated for MSC in HQ
 - Administration – OASA(CW) and OMB
 - Other Federal Agencies
 - Congressional Engagements
 - Stakeholder engagements

- **Vertical Team “Alignment”**



CIVIL WORKS PROJECT DECISIONS

TWO SEPARATE AND DISTINCT DECISIONS

AUTHORIZATION: “PERMISSION”

- Key Questions:
 - Is it a good project?
 - Is this a *Federal Project*?
 - Should the Corps Implement it?
 - Who should Pay? What Percentage?

- **Senate:** Committee on Environment and Public Works
- **House:** Committee on Transportation and Infrastructure

APPROPRIATIONS: “Funding”

- Key Questions:
 - Can we afford it?
 - How expensive is it?
 - How much should we spend?
 - When should we spend it?
 - What priority is it?

- **Senate:** Sub-committee on Energy and Water
- **House:** Sub-committee on Energy and Water

Both Decisions Require Congressional Hearings & HQUSACE Actions

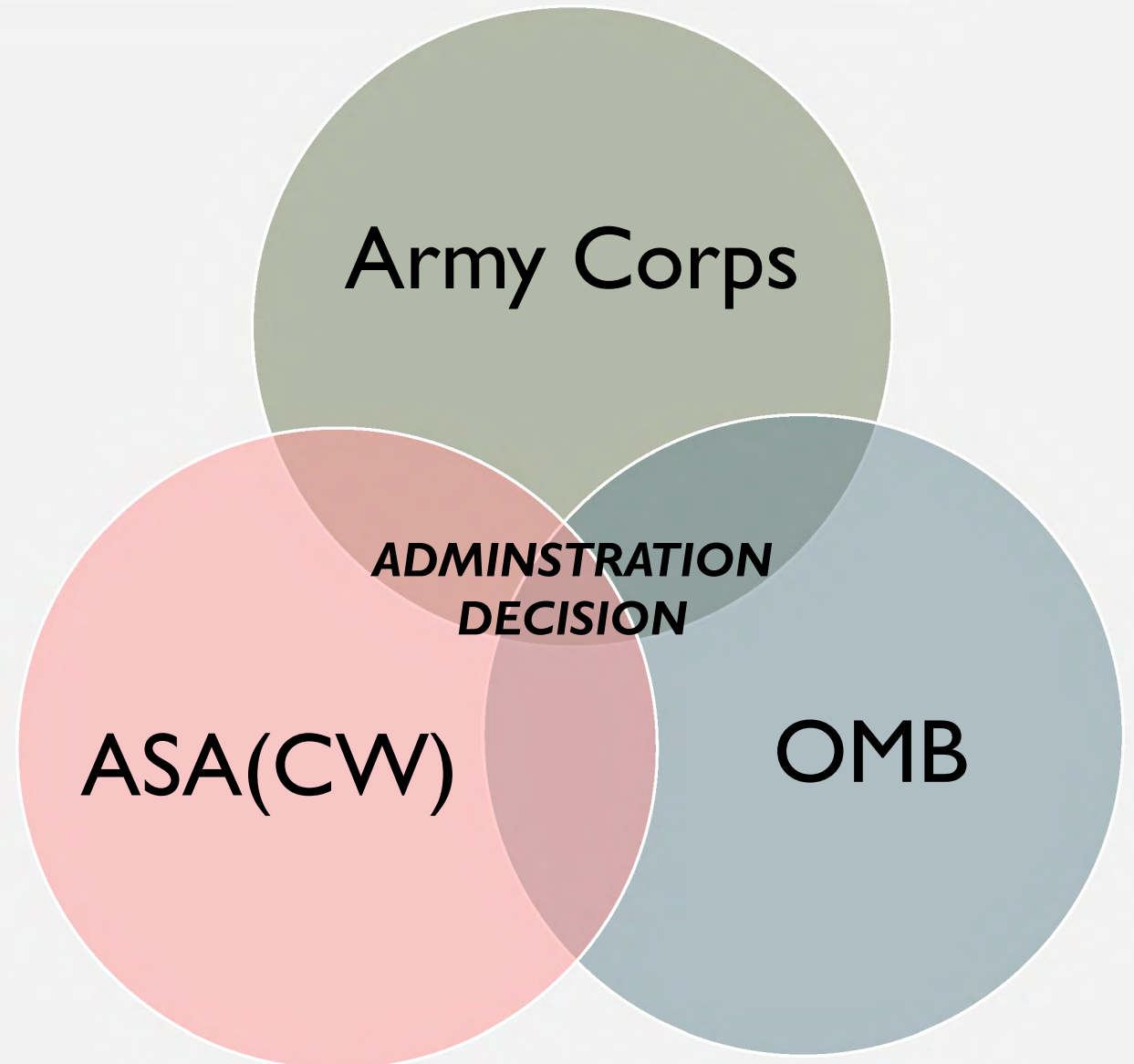
- 4 (or more hearings) – 2 House/2 Senate
- RITs work with HQ to prepare materials & witness preparation (Usually the CG)
- Legislative Drafting Services, technical assistance, & effects statements

ADMINISTRATION DECISIONS

Three Separate Offices

- Army Corps of Engineers
- Assistant Secretary of the Army (Civil Works)
- Office of Management & Budget

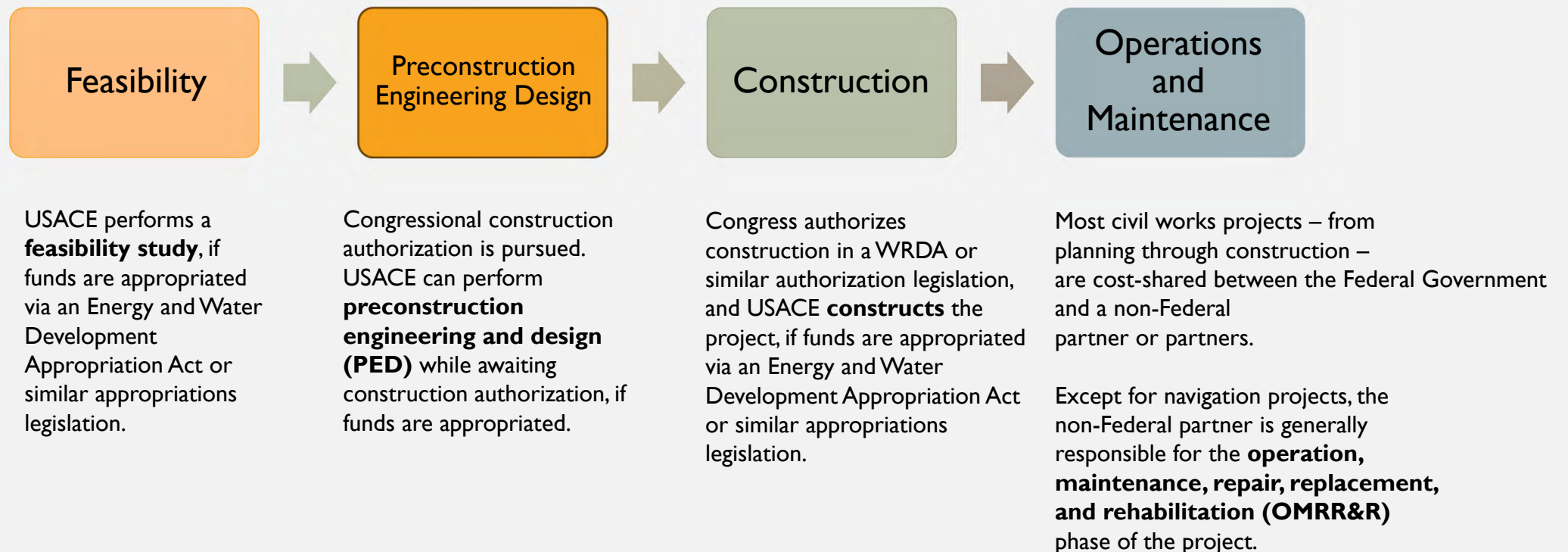
Decision Criteria & Priorities may differ across each office



CIVIL WORKS PROJECT PHASES

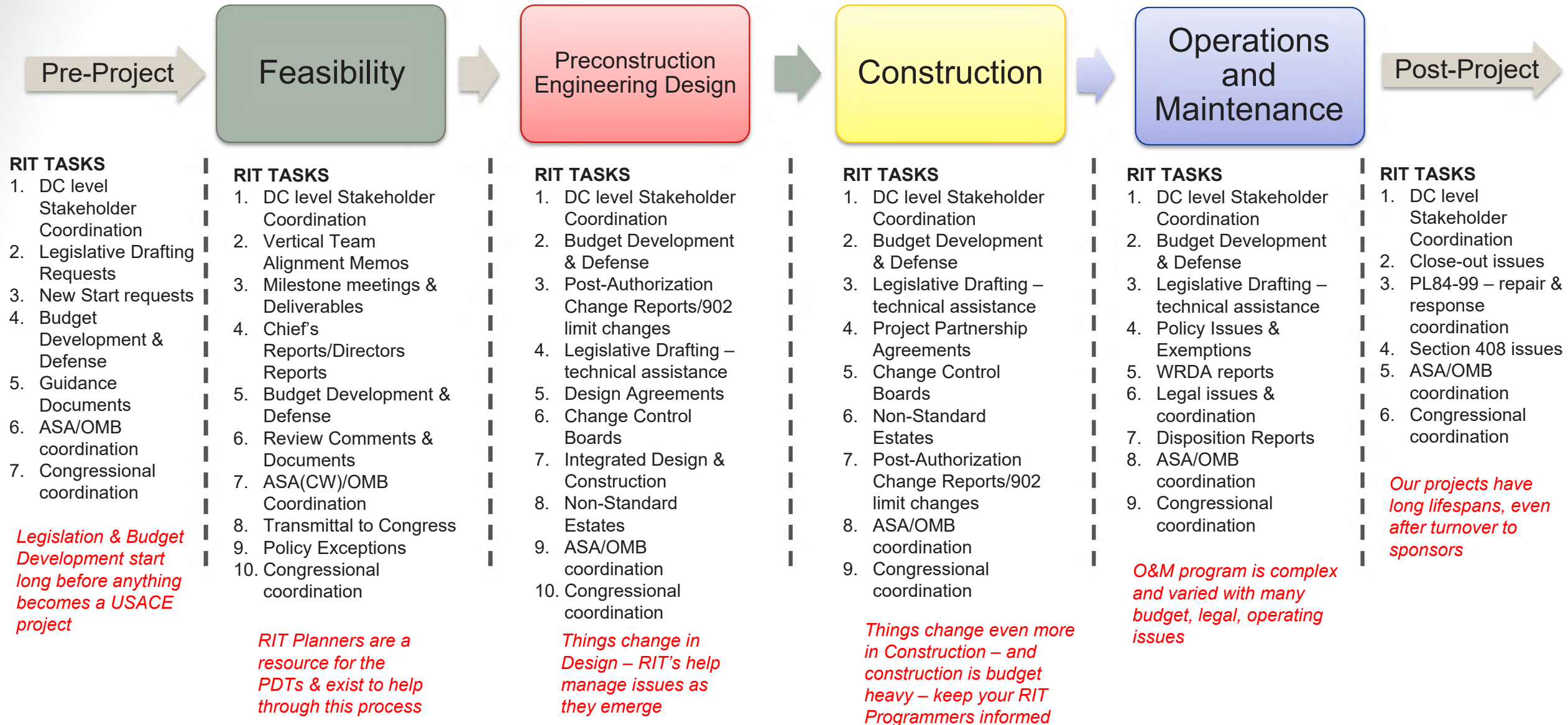
Congressional authorization and appropriations processes are critical actions in a multi-step process to deliver a USACE project. USACE civil works water resources activities are initiated by non-Federal partners or potential non-Federal partners, authorized by Congress, funded by Federal and non-Federal partners, and typically constructed by private contractors supervised by USACE.

Most study and project partnerships are initiated via a request to the local USACE District office. A project manager in the District will work with an interested non-Federal partner to learn about the water resources problem. If it is determined that the problem is appropriate for USACE involvement, the non-Federal partner and the USACE team will work together to advance the study or the project through the following:





RITS COVER ALL PROJECT PHASES





RIT ROLE IN THE FEASIBILITY PHASE

1. DC level Stakeholder Coordination
 - Meets with potential project sponsors
 - Assist with Congressional Drafting Services
 - Assist with development of fact sheet and briefing materials for HQ Leaders

2. Vertical Team Alignment Memos
 - Reviews and participates in VTAM development (EP 1105-2-61). If there are any nonalignment concerns with the RIT, the reasons must be discussed with the VTAM.
 - Processes VTAM at HQ.
 - If exception is required RIT processes materials, schedules Senior Leader Panel, DCG briefing.
 - Develops HQ portion of Packages to include House and Senate letters, DCG Memo to ASA.
 - Routes and Champions packet through HQ and assist with transmittal of materials to ASA.
 - Assists in the resolution of Policy question. Works with HQ Policy team and OWPR.

3. Milestone meetings & Deliverables
 - Assist with the development of Milestone meeting deliverables. Attends pre-briefings and provides comments on draft milestone deliverables.
 - Attends Milestone meetings.
 - Part of the Vertical Alignment team.
 - Process all deliverable products (Draft report and Final Report Packages)
 - Assist with review of the Draft report. Works with OWPR to establish P&LCR review.



RIT ROLE IN THE FEASIBILITY PHASE

4. Chief's Reports/Directors Reports

- Process all materials and deliverable products associated with final reports
- Reviews all products for completeness and consistency
- Works with Review Manger for review and completing of PGM
- Schedules issue resolution conference to resolve incomplete comments in the PGM
- Work with OWPR to develop Chief and Directors report
- Schedules Chief or Director briefings for reports
- Transmits all final products over to ASA

5. Budget Development & Defense

- Works with MSC/PDT to develop the budget and then champion the budgets with ASA and OMB

6. Review Comments & Documents

- Reports, Presentation, VTAMs packages... You name if its a Planning document that comes up to HQ the RIT reviews and likely is the team that champions it and pushes it through the system.



RIT ROLE IN THE FEASIBILITY PHASE

7. ASA(CW)/OMB Coordination

- Assist in the processing and answering questions from either OASA or OMB. (i.e. Chief reports/ Directors Reports/ WRDA reports)

8. Transmittal to Congress

- Works with the OASA (CW) staff to ensure that reports are transmitted to congress.
- Assist Future Directions Office to answer Congressional inquiries.
- Develop draft notification letters to Senate and House Committees for various documents processed by HQ and OASA.

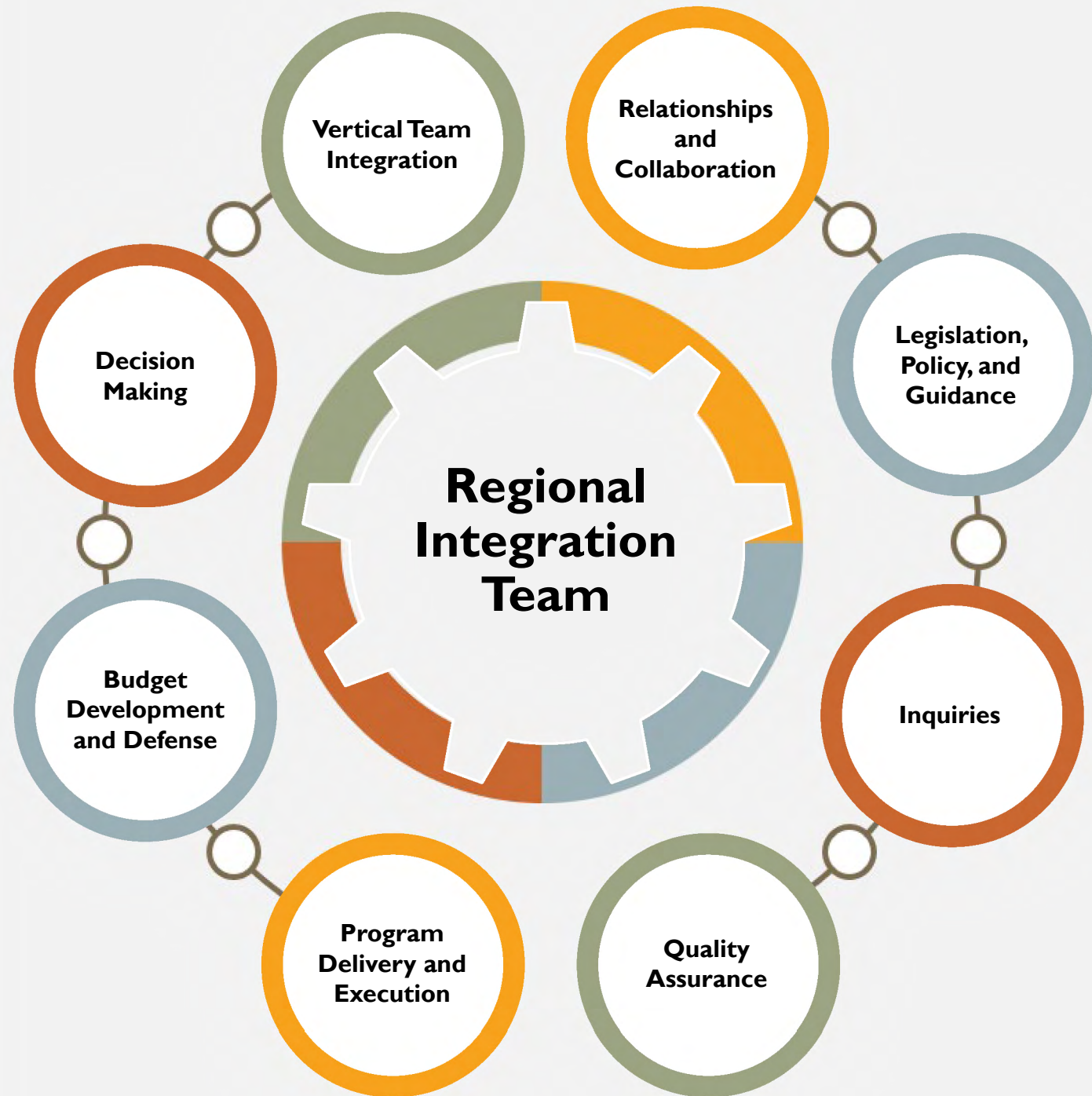
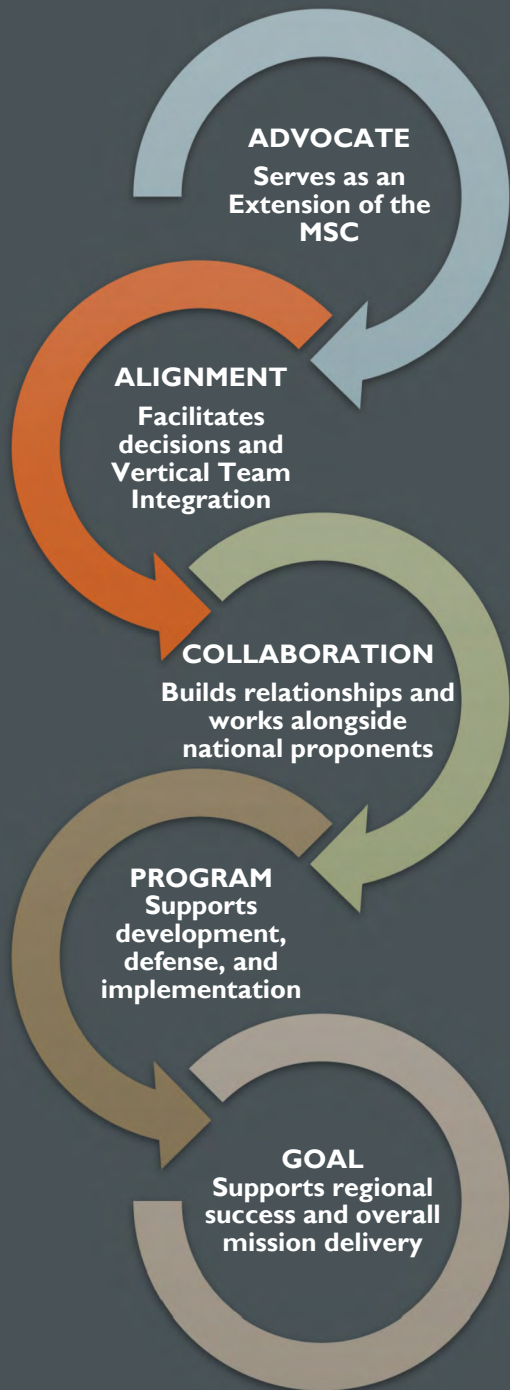
9. Policy Exceptions

- Works with MSC/PDT to develop exception and champions it through HQ to OASA.

10. Congressional coordination

- Meets with Congressional staff.
- Works with Future Direction to answer inquiries from Congressional Offices.

PRIMARY ROLES



KEEPING IN TOUCH

Weekly

- Supplemental Programs Call
- Civil Works Programs Synch Call
- Programs and Project Management CoP Call
- MSC-RIT Synch Call

Monthly

- Point to Point (P2P) Engagements
- Civil Works Delivery Review with Commanders (DRC)
- SITREP

Periodically

- Project or Issue Specific Meetings
- TEAMS – Nearly a daily interface
- Regional Governance Week
- Civil Works Program Management Review (CW PMR)
- SharePoint
- Regular Emails
- Change Control Boards and Prep Sessions

A DAY IN THE LIFE OF...

what's going on now

RIT PLANNER

- Vertical Team Alignment on high-priority feasibility studies
- Implementation of comprehensive benefits assessments
- Coordination of 3x3x3 and NED waivers
- Review of Section 7001 proposals
- Participation in feasibility milestone meetings and mega-study tier reviews
- Assist HQ tracking of Feasibility Studies

- Recent Examples
 - Tafuna 3x3x3 Exception
 - Holt County Missouri Vertical Team Alignment Memorandum
 - Akutan ESA/MMPA Exception
 - Columbia River: Denial of Water Quality Certification/ 404(t)
 - Rathbun Regional Water Association draft Water Storage Agreement package
 - Lower Columbia River Turning Basins: TSP Milestone
 - WRDA 2022 Section 8220 Report to Congress - Willamette Valley Hydropower Disposition

RIT PROGRAMMER

- Assessment of FY24 capabilities, defense of FY25 funding needs, and preparation for FY26 budget development
- Anticipation of legislative drafting services and WRDA 24 Effects Statements
- Facilitation of data calls
- Preparation for congressional hearings
- Meetings with project stakeholders and response to congressional inquiries

- Recent Examples
 - Howard Hansen Dam - Integrated Design and Construction (IDaC) Business Cases
 - Garrison Dam Safety Funding – Communication and Defense
 - Manhattan, KS 902 Letters and Funding Strategies
 - Dutch Harbor, Little Wood River ID – Project Partnership Agreements
 - Mile High Flood District - Mr. Connor engagement
 - NWD & POD Hearing Preparations
 - Lowell Creek, AK - Change Control Board
 - Unalaska Chains - Reprogramming Actions
 - Stakeholder engagement with MOARC, MHFD, Kodiak, Seward, Unalaska, etc....



TAKE HOME MESSAGES

- **RITs are your entry and your guide to DC processes & procedures**
 - Policy
 - Legislation
 - Budget
- **Communicate early & often**
 - Don't sanitize information
 - Work with your MSC's
 - Communicate *BEFORE* milestones
 - Alignment doesn't always = agreement
 - Don't underestimate sponsor visits to DC
 - Planners, hug your programmers!
- **Endowed Chairs**
 - Requirements for becoming an endowed chair vary by MSC. Talk your supervisor if you are interested in opportunities to do a detail with your RIT.
- ***Our Priority is to execute the mission – TOGETHER!***



QUESTIONS AND DISCUSSION

HOW CAN WE BETTER SUPPORT PROGRAM DELIVERY?