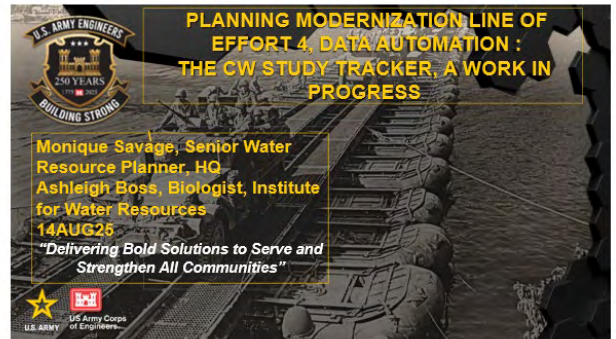


This webinar provided an overview of the new Civil Works Study Tracker Dashboard. Presented by Monique Savage (Senior Water Resources Planner, HQUSACE PCoP Team) and Ashleigh Boss (Biologist, IWR), this webinar introduced the tracker, which is designed to facilitate project transparency, pulling information directly from the enterprise USACE project management system (PROMIS) to provide simplified access to study details.



This summary of the Question/Answer session of the webinar is not a transcription; questions and responses have been edited and reordered for clarity.

Relevant Resources:

- [Civil Works Study Tracker Power BI Dashboard \(beta version\)](#) 

Tracker Coverage and Data Sources

Does all the information displayed in the Project Information table (e.g., total approved study cost, pending/ongoing exemption, mega study) come directly from PROMIS?

Not all of the information in the tracker is drawn from PROMIS. Some of it, including information extracted from Vertical Team Alignment Memoranda and policy exception requests, is compiled by Daniela Todesco (HQUSACE Planning/Investigations Portfolio Manager) and other contributors through manual data entry.

The Data Dictionary on the Dashboard defines the field names used in the tables on the dashboard and identifies the data source (e.g., PROMIS, CEFMS, or human input).

Any errors in human-input fields should be addressed by coordinating with your Regional Integration Team Planner for correction. Errors in fields from PROMIS or CEFMS should be addressed directly with the project's Project Manager.




Study Schedules and Terminology

If a study schedule is updated or rebenchmarked during the course of a study, how is the updated schedule reflected?


The Study Tracker is directly linked to PROMIS and refreshes every 24 hours. Once the schedule (the PMB or Project Management Baseline schedule) is updated in PROMIS, it will automatically be reflected in the Study Tracker.

Is there a data dictionary available that defines key terms such as “baselined” and “benchmarked”?

There are several resources available for reference. These resources include:

- The Data Dictionary on the Civil Works Study Tracker defines the field names used in the tables on the dashboard and identifies the data source (e.g., PROMIS, CEFMS, or human input).
- [PROMIS data dictionary](#)  (2025, online on the PROMIS intranet)
- An older [PROMIS data dictionary](#)  of project-level codes (2019, PDF)
- FY27 Program Development Manual [\(PDM\) Data Dictionary for CWIFD](#) 

Civil Works Study Tracker Dashboard
Q&A Summary

- [Appendix A of the Program Execution Guidance](#), which explains the [Revolutionize Performance Monitoring \(RPM\) Dashboard](#)  benchmarking process and how it uses PROMIS data.