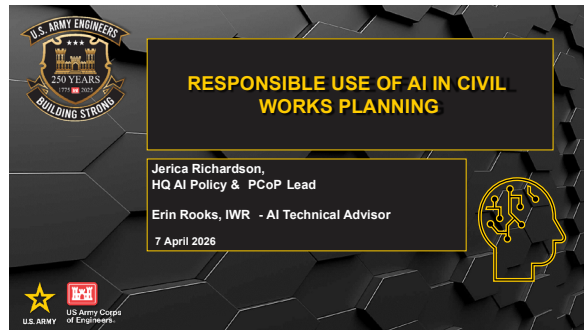


*This PCoP webinar provided an overview the newly released “Ethical and Responsible Use of Artificial Intelligence in Planning Programs and Studies” memorandum and introduced two AI-assisted chatbots available for USACE teams. Presented by Jerica Richardson (HQUSACE Planning AI Lead), Erin Rooks (IWR Water Resources Center AI Lead/uPoP proponent), and Rachel Grandpre (IWR e Risk Register PM/eERRA proponent), the webinar familiarized planners with sanctioned AI tools they can use immediately, as well as an understanding of the ethical boundaries governing their use.*



*This summary of the Question/Answer session of the webinar is not a transcription; questions and responses have been edited and reordered for clarity.*

**Key Resources:**

- Memorandum: [Ethical and Responsible Use of Artificial Intelligence in Planning Programs and Studies](#)

**USACE Guidance, Training, and Information:**

- [Exploring AI in Planning page](#) – PCoP Knowledge Management Portal
- [SAD “AI Portal”](#) with useful links for trainings, prompt libraries, and more
- [USACE Artificial Intelligence Exchange \(USACE AIX\)](#) – the AI Community of Practice Knowledge Management Portal

**USACE-Sanctioned AI Tools and Websites:**

- DOW GenAI: <https://genai.mil/> - access to Gemini large language model (LLM), approved for CUI
- AskSage: <https://chat.genai.army.mil/login?code=ARMY-CIO> – access to multiple models and agents, approved for CUI
  - *Note: The first time you log into AskSage you will need to create an account. For subsequent uses, you will be able to use CAC login.*
- [Army Vantage PCoP Workspace](#) (Email [planningonline@usace.army.mil](mailto:planningonline@usace.army.mil) for feedback on the AI Assistants or access to the workspace)
  - [e-ERRA Direct Link](#) (provide specific feedback on the ERR AI Chat Assistant via [err@usace.army.mil](mailto:err@usace.army.mil))
  - [uPoP Direct Link](#)
  - [Army Vantage Threads](#) (large language model that can interact with other Vantage workspaces)
  - *Note: The first time you log into Vantage you will need to request access. Once access has been granted, you will receive a notification that you can start using the platform and will be able to use CAC login for subsequent uses.*

### **Requirements when Using AI in Planning Products**

**With all the different available AI platforms, is there one location that organizes them all with details about appropriate uses and up to date capabilities?**

The PCoP and IWR AI team will work on developing a “go to” page that has all AI platform information needed by planners in one place and will let the community know the location once finalized.

**Is there a particular format in which planners are required to cite AI to meet the transparency principle discussed in the [Ethical and Responsible Use of Artificial Intelligence in Planning Programs and Studies](#) memo (i.e., in the references section of an integrated feasibility report)?**

The PCoP AI team is currently working through creating more formal guidance for citing AI outputs, but for now planners should use the same format used for citing any other online resource/platform. In addition, [DoD Instruction 5400.19: Public Affairs Use of Artificial Intelligence](#) discusses considerations for citing AI-generated content.

The recommended citation format should follow APA seventh edition guidelines, which is widely accepted standard for AI citation currently – for example: OpenAI. (2026). ChatGPT (GPT-5.1) [LLM]. <https://chatgpt.com>

**Should AI be cited as a source if it doesn’t generate any new information in and of itself? Instead, should planners cite the sources the AI tool in question is using to develop its outputs instead of the AI tool itself?**

AI tools don’t generate original information; they synthesize and pattern match from training, with data drawn from existing sources. Accordingly, planners should cite the underlying source(s) whenever they can be identified or reasonably interred. However, AI-generated output should also be signed as a secondary source to ensure transparency and traceability (e.g., “AI was used for editing and summarization in this report” or “AI was used to generate graphics.”)

**When documenting the prompt(s) used to obtain AI content for use in a Planning product, is an explanation about why prompts were phrased the way they were (or the evolution of prompts) required?**

The documentation of prompts is, at this point, for transparency and understanding; we don’t anticipate prompts to be reviewed, approved, etc. If you are using AI tools to generate content, documenting the phrasing of the final prompt input into the AI tool, information about the tool, and how the AI output was used within a draft or final report will be useful information to have on hand.

**Is there an effort to look at reproducibility, especially if sources are not included, to address QA/QC concerns regarding AI-generated analyses or text?**

In general, reproducibility may not be achievable due to improvements to large language models, knowledge content, and directions to those bots. However, accurate and complete results are essential. The two assistants demoed, uPoP and e-RRA, are both required to provide a reference for any written source as hallucinations are common and users must verify references. Further, the knowledge foundation for these tools is built on authoritative and maintained data. The PCoP and IWR AI team is working on metrics to assess models on response accuracy and completeness for policies and guidance and the e-Risk Register content in e-RRA. The team is working with the USACE Chief Data Officer to validate and endorse authoritative data, pipelines, agents and applications. Processes are still being built by USACE to overall test, validate, and endorse related assets in general to improve AI consistency and

accuracy overall. In AskSage, users can also create "personas" that allow for consistent context from which answers are developed.

**Are USACE employees limited to using Department of Army/Department of War approved tools? Another USACE AI webinar series noted that any AI tool can be used for USACE work as long as no CUI or PII inputs are used.**

Department of Army and Department of War-approved AI tools should always be the first choice, if feasible and depending on the task at hand. These are the only tools approved for CUI. If your work effort does not involve CUI, the use of other commercial versions of AI tools is permitted (e.g., for tasks such as drafting an agenda). There is currently no official guidance on use of personal accounts and no prohibition on the use of paid subscriptions for approved AI tools, though users must be sure to not input any CUI or PII information.

### **USACE Model and Data Connections to AI Tools**

**How are approved planning models and USACE data (i.e., H&H data, structure inventories) connected to approved AI tools (H&H, structure inventories, etc.)? How are the results of dataset exploration and summarization being QA/QC-ed?**

Currently, USACE doesn't have any "approved AI tools" nor a process to establish this. However, USACE is working on this overall. Further, approved planning models and data are not all accessible to AI tools. However, the PCoP has been working to make data accessible and integrated so that it would be AI ready for those online applications. Desktop software would be difficult to make accessible in an AI tool, as is.

Currently, the uPoP assistant is being built in Army Vantage from the files and data from the Project Assistance Library (PAL) at [publibrary.sec.usace.army.mil](http://publibrary.sec.usace.army.mil). The Army Vantage Team is building a live connection to this data now, which will be the first USACE connection. Similarly, the e-RRA Assistant is being updated from the e-Risk Register on at least a monthly basis. These tools are limited in what the AI tool can access. Commercial tools will use any and all data published across the internet, including the good with the bad. Results from data and AI summarization would have to be absorbed into the normal planning review process. AI can also be helpful in potentially finding errors and doing QA/QC.

**Are there any plans to adapt available AI tools for study/project management in connection with scheduling software (i.e., P2)? Currently, generating agendas using policy/guidance is going to be limited to study initiation and milestone prep; it would be helpful to automate 30-day schedule lookaheads for routine meetings.**

There are several efforts across USACE to connect PROMIS data to Army Vantage to build AI applications. The PROMIS team has demonstrated some potential AI capabilities in the future within that tool.

### **USACE Policy and Publication (UPoP) AI Chatbot**

**In which priority order will Water Resources Development Act (WRDA) Implementation Guidance, and other guidance memoranda be added to and/or connected to uPoP?**

The addition of economic guidance memoranda (EGMs) and the Planning Bulletins is currently in progress and will be completed within several weeks. WRDA Implementation Guidance will take more time and is dependent on other teams.

**Does the uPoP platform have a size limit for documents? GenAI doesn't do well if too many pages are input; it gets stuck and makes a lot of errors.**

uPoP is not on GenAI. It is on Army Vantage and includes thousands of documents and many documents have hundreds of pages. Some files are not fully being read by the AI and we are working through that. There appears to be some limitations to building AI agents, but some can be overcome behind the scenes. Uploading a file in the chatbot may be more limited in general. However, every model has its own context window and limitations. Generally, Gemini's context window is about 2,500 pages. Once you add too many documents, it takes time, because the model has to read through the entire conversation, as well as all attachments, before it can generate a response. Starting new chats can help with this issue, as can creating a set of instructions to copy and paste.

**General AI Tool Availability & Capabilities for Planners**

**Is there a timeline for CoPilot deployment to all USACE machines?**

There is not yet a timeline, as security issues are still being considered and worked on. Jerica Richardson will alert PCoP members if and when CoPilot becomes available for deployment to all USACE employees.

**How often do old chats get cleared out in GenAI? Do all of the approved AI tools offer the ability to download conversations?**

By default, chat sessions for most large language models are automatically deleted after 60 days. Users can also manage their chat history manually to rename, star for quick access, or delete chats that are no longer needed. In addition, if you share a conversation and later delete the shared link, the chat still remains in your personal history until the 60-day retention period is over. Most AI tools/agents offer the ability to download conversations; it is recommended that users download Vantage's conversation records "without reasoning."

**Is there an AI model available for USACE use that is capable of imagery generation?**

AskSage is capable of imagery generation; be sure to select one of the models that lists image generation as a capability.

**How effective is the microphone/voice interaction feature in using AI tools?**

Currently, ACE-IT has disabled the use of microphones in connecting to AI tools via USACE machines. However, there may be potential for this feature to be re-enabled at a later date.

**Will approved AI tools allow for Word rather than text downloads soon?**

This depends on the tool and the latest updates or improvements. GenAI.mil has a new agent that can create Word documents; however, this is a general Large Language Model and not trained on a specific dataset. Most tools allow a copy and paste function at a minimum.